

A9761

Leader in Biomolecular Solutions for Life Science



HLA-DQA2 Rabbit pAb

Catalog No.: A9761

Basic Information

Observed MW

28kDa

Calculated MW

28kDa

Category

Polyclonal Antibody

Applications

WB, ELISA

Cross-Reactivity

Mouse, Rat

Background

This gene belongs to the HLA class II alpha chain family. The encoded protein forms a heterodimer with a class II beta chain. It is located in intracellular vesicles and plays a central role in the peptide loading of MHC class II molecules by helping to release the CLIP molecule from the peptide binding site. Class II molecules are expressed in antigen presenting cells (B lymphocytes, dendritic cells, macrophages) and are used to present antigenic peptides on the cell surface to be recognized by CD4 T-cells.

Recommended Dilutions

WB 1:500 - 1:1000

Immunogen Information

Gene ID

3118

Swiss Prot

P01906

Immunogen

Recombinant fusion protein containing a sequence corresponding to amino acids 24-125 of human HLA-DQA2 (NP_064440.1).

Synonyms

DQA1; HLA-DCA; HLA-DXA; HLADQA2; DC-alpha; DX-ALPHA; HLA-DQA2

Contact



www.abclonal.com

Product Information

Source

Rabbit

Isotype

IgG

Purification

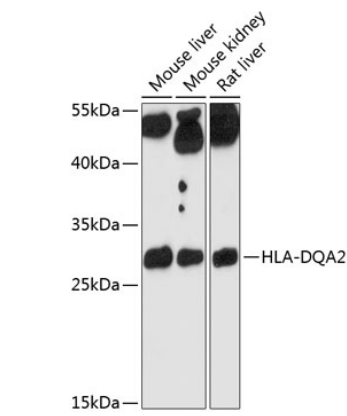
Affinity purification

Storage

Store at -20°C. Avoid freeze / thaw cycles.

Buffer: PBS with 0.01% thimerosal, 50% glycerol, pH7.3.

Validation Data



Western blot analysis of various lysates using HLA-DQA2 Rabbit pAb (A9761) at 1:3000 dilution.
Secondary antibody: HRP Goat Anti-Rabbit IgG (H+L) (AS014) at 1:10000 dilution.
Lysates/proteins: 25µg per lane.
Blocking buffer: 3% nonfat dry milk in TBST.
Detection: ECL Enhanced Kit (RM00021).
Exposure time: 90s.