

A9753

Leader in Biomolecular Solutions for Life Science



CLEC16A Rabbit pAb

Catalog No.: A9753

Basic Information

Observed MW

118kDa

Calculated MW

118kDa

Category

Mouse Monoclonal Antibody

Applications

WB, ELISA

Cross-Reactivity

Human

Background

This gene encodes a member of the C-type lectin domain containing family. Single nucleotide polymorphisms in introns of this gene have been associated with diabetes mellitus, multiple sclerosis and rheumatoid arthritis. Multiple transcript variants encoding different isoforms have been found for this gene.

Recommended Dilutions

WB 1:200 - 1:2000

Immunogen Information

Gene ID

23274

Swiss Prot

Q2KHT3

Immunogen

Recombinant fusion protein containing a sequence corresponding to amino acids 330-550 of human CLEC16A (NP_001230332.1).

Synonyms

Gop-1; KIAA0350; CLEC16A

Contact



www.abclonal.com

Product Information

Source

Rabbit

Isotype

IgG

Purification

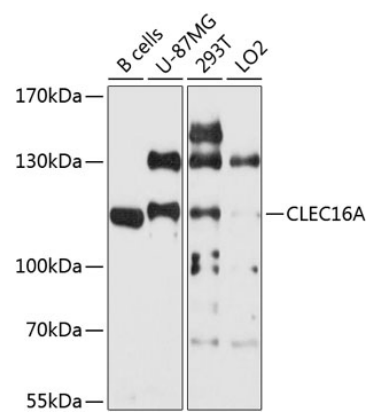
Affinity purification

Storage

Store at -20°C. Avoid freeze / thaw cycles.

Buffer: PBS with 0.02% sodium azide, 50% glycerol, pH 7.3.

Validation Data



Western blot analysis of extracts of various cell lines, using CLEC16A antibody (A9753) at 1:1000 dilution.
Secondary antibody: HRP Goat Anti-Rabbit IgG (H+L) (AS014) at 1:10000 dilution.
Lysates/proteins: 25µg per lane.
Blocking buffer: 3% nonfat dry milk in TBST.
Detection: ECL Basic Kit (RM00020).
Exposure time: 90s.