

# TOMM22 Rabbit mAb

Catalog No.: A9666 **Recombinant**

## Basic Information

### Observed MW

18kDa

### Calculated MW

16kDa

### Category

Primary antibody

### Applications

ELISA, WB, IHC-P, IP

### Cross-Reactivity

Human, Mouse, Rat

### CloneNo number

ARC1688

## Background

The protein encoded by this gene is an integral membrane protein of the mitochondrial outer membrane. The encoded protein interacts with TOMM20 and TOMM40, and forms a complex with several other proteins to import cytosolic preproteins into the mitochondrion.

## Recommended Dilutions

**WB** 1:500 - 1:1000

**IHC-P** 1:50 - 1:200

**IP** 0.5µg-4µg antibody for  
200µg-400µg extracts of  
whole cells

## Immunogen Information

### Gene ID

56993

### Swiss Prot

Q9NS69

### Immunogen

A synthetic peptide corresponding to a sequence within amino acids 1-100 of human TOMM22 (Q9NS69).

### Synonyms

1C9-2; TOM22; MST065; MSTP065; TOMM22

## Contact

 | [www.abclonal.com](http://www.abclonal.com)

## Product Information

### Source

Rabbit

### Isotype

IgG

### Purification

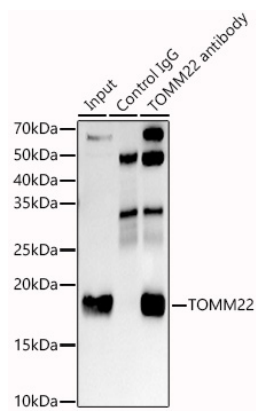
Affinity purification

### Storage

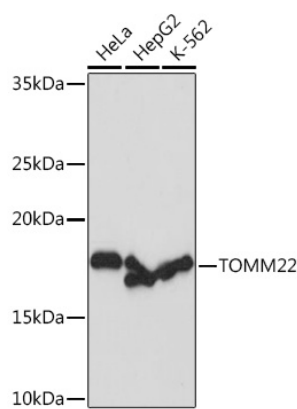
Store at -20°C. Avoid freeze / thaw cycles.

Buffer: PBS with 0.02% sodium azide, 0.05% BSA, 50% glycerol, pH7.3.

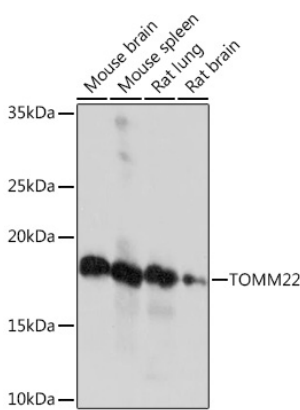
Validation Data



Immunoprecipitation analysis of 300 µg extracts of K-562 cells using 3 µg TOMM22 antibody (A9666). Western blot was performed from the immunoprecipitate using TOMM22 antibody (A9666) at a dilution of 1:1000.



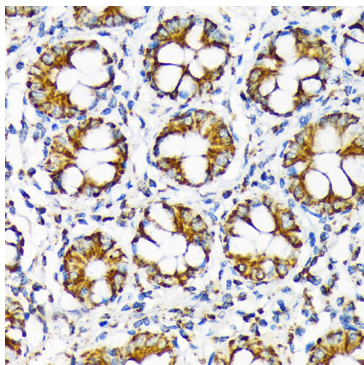
Western blot analysis of lysates from HeLa cells, using TOMM22 Rabbit mAb (A9666) at 1:1000 dilution.  
Secondary antibody: HRP Goat Anti-Rabbit IgG (H+L) (AS014) at 1:10000 dilution.  
Lysates/proteins: 25µg per lane.  
Blocking buffer: 3% nonfat dry milk in TBST.  
Detection: ECL Basic Kit (RM00020).  
Exposure time: 1s.



Western blot analysis of various lysates using TOMM22 Rabbit mAb (A9666) at 1:1000 dilution.  
Secondary antibody: HRP Goat Anti-Rabbit IgG (H+L) (AS014) at 1:10000 dilution.  
Lysates/proteins: 25µg per lane.  
Blocking buffer: 3% nonfat dry milk in TBST.  
Detection: ECL Enhanced Kit (RM00021).  
Exposure time: 3min.

## Validation Data

---



Immunohistochemistry analysis of TOMM22 in paraffin-embedded human colon using TOMM22 Rabbit mAb (A9666) at dilution of 1:100 (40x lens). Perform microwave antigen retrieval with 10 mM Tris/EDTA buffer pH 9.0 before commencing with IHC staining protocol.