

A9643

Leader in Biomolecular Solutions for Life Science



GNB2 Rabbit mAb

Catalog No.: A9643

Recombinant

1 Publications

Basic Information

Observed MW

35kDa

Calculated MW

37kDa

Category

SMab Recombinant Monoclonal Antibody

Applications

WB,IHC-P,ELISA

Cross-Reactivity

Human,Mouse,Rat

CloneNo number

ARC1675

Background

Heterotrimeric guanine nucleotide-binding proteins (G proteins), which integrate signals between receptors and effector proteins, are composed of an alpha, a beta, and a gamma subunit. These subunits are encoded by families of related genes. This gene encodes a beta subunit. Beta subunits are important regulators of alpha subunits, as well as of certain signal transduction receptors and effectors. This gene contains a trinucleotide (CCG) repeat length polymorphism in its 5' UTR.

Recommended Dilutions

| | |
|-------|----------------|
| WB | 1:500 - 1:1000 |
| IHC-P | 1:50 - 1:200 |

Immunogen Information

Gene ID

2783

Swiss Prot

P62879

Immunogen

Recombinant fusion protein containing a sequence corresponding to amino acids 1-90 of human GNB2 (P62879).

Synonyms

SSS4; HG2C1; NEDHYDF; GNB2

Contact



www.abclonal.com

Product Information

Source

Rabbit

Isotype

IgG

Purification

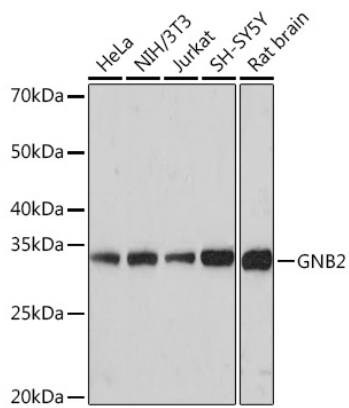
Affinity purification

Storage

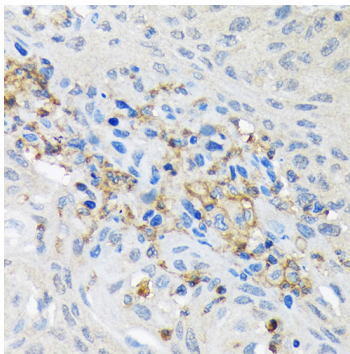
Store at -20°C. Avoid freeze / thaw cycles.

Buffer: PBS with 0.02% sodium azide,0.05% BSA,50% glycerol,pH7.3.

Validation Data



Western blot analysis of extracts of various cell lines, using GNB2 Rabbit mAb (A9643) at 1:1000 dilution.
Secondary antibody: HRP Goat Anti-Rabbit IgG (H+L) (A5014) at 1:10000 dilution.
Lysates/proteins: 25µg per lane.
Blocking buffer: 3% nonfat dry milk in TBST.
Detection: ECL Basic Kit (RM00020).
Exposure time: 90s.



Immunohistochemistry analysis of paraffin-embedded human lung cancer using GNB2 Rabbit mAb (A9643) at dilution of 1:100 (40x lens). Perform microwave antigen retrieval with 10 mM Tris/EDTA buffer pH 9.0 before commencing with IHC staining protocol.