

A9636

Leader in Biomolecular Solutions for Life Science



PHKA2 Rabbit pAb

Catalog No.: A9636

Basic Information

Observed MW

138kDa

Calculated MW

138kDa

Category

Polyclonal Antibody

Applications

WB, ELISA

Cross-Reactivity

Human

Background

Phosphorylase kinase is a polymer of 16 subunits, four each of alpha, beta, gamma and delta. The alpha subunit includes the skeletal muscle and hepatic isoforms, and the hepatic isoform is encoded by this gene. The beta subunit is the same in both the muscle and hepatic isoforms, and encoded by one gene. The gamma subunit also includes the skeletal muscle and hepatic isoforms, which are encoded by two different genes. The delta subunit is a calmodulin and can be encoded by three different genes. The gamma subunits contain the active site of the enzyme, whereas the alpha and beta subunits have regulatory functions controlled by phosphorylation. The delta subunit mediates the dependence of the enzyme on calcium concentration. Mutations in this gene cause glycogen storage disease type 9A, also known as X-linked liver glycogenosis. Alternatively spliced transcript variants have been reported, but the full-length nature of these variants has not been determined.

Recommended Dilutions

WB 1:200 - 1:2000

Immunogen Information

Gene ID

5256

Swiss Prot

P46019

Immunogen

Recombinant fusion protein containing a sequence corresponding to amino acids 620-780 of human PHKA2 (NP_000283.1).

Synonyms

PHK; PYK; XLG; PYKL; XLG2; GSD9A; PHKA2

Contact



www.abclonal.com

Product Information

Source

Rabbit

Isotype

IgG

Purification

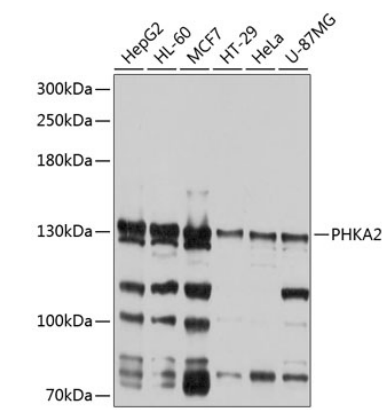
Affinity purification

Storage

Store at -20°C. Avoid freeze / thaw cycles.

Buffer: PBS with 0.02% sodium azide, 50% glycerol, pH 7.3.

Validation Data



Western blot analysis of various lysates using PHKA2 Rabbit pAb (A9636) at 1:1000 dilution.
Secondary antibody: HRP Goat Anti-Rabbit IgG (H+L) (A5014) at 1:10000 dilution.
Lysates/proteins: 25µg per lane.
Blocking buffer: 3% nonfat dry milk in TBST.
Detection: ECL Basic Kit (RM00020).
Exposure time: 5s.