

A9566

Leader in Biomolecular Solutions for Life Science



## Fascin/FSCN1 Rabbit mAb

Catalog No.: A9566

Recombinant

2 Publications

### Basic Information

#### Observed MW

54kDa

#### Calculated MW

55kDa

#### Category

SMab Recombinant Monoclonal Antibody

#### Applications

WB, IHC-P, ELISA

#### Cross-Reactivity

Human, Mouse, Rat

#### CloneNo number

ARC1638

### Background

This gene encodes a member of the fascin family of actin-binding proteins. Fascin proteins organize F-actin into parallel bundles, and are required for the formation of actin-based cellular protrusions. The encoded protein plays a critical role in cell migration, motility, adhesion and cellular interactions. Expression of this gene is known to be regulated by several microRNAs, and overexpression of this gene may play a role in the metastasis of multiple types of cancer by increasing cell motility. Expression of this gene is also a marker for Reed-Sternberg cells in Hodgkin's lymphoma. A pseudogene of this gene is located on the long arm of chromosome 15.

### Recommended Dilutions

WB	1:500 - 1:1000
IHC-P	1:50 - 1:200

### Immunogen Information

#### Gene ID

6624

#### Swiss Prot

Q16658

#### Immunogen

Recombinant fusion protein containing a sequence corresponding to amino acids 249-362 of human Fascin/FSCN1 (Q16658).

#### Synonyms

HSN; SNL; p55; FAN1; Fascin/FSCN1

### Contact



[www.abclonal.com](http://www.abclonal.com)

### Product Information

#### Source

Rabbit

#### Isotype

IgG

#### Purification

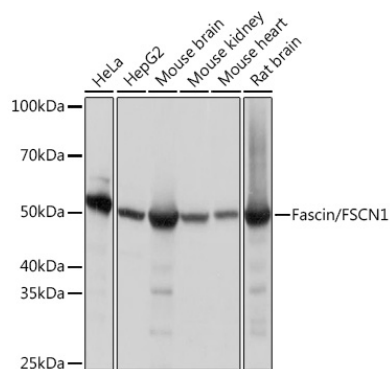
Affinity purification

#### Storage

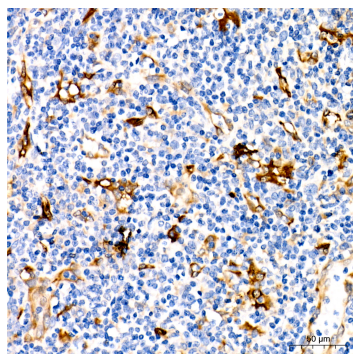
Store at -20°C. Avoid freeze / thaw cycles.

Buffer: PBS with 0.02% sodium azide, 0.05% BSA, 50% glycerol, pH 7.3.

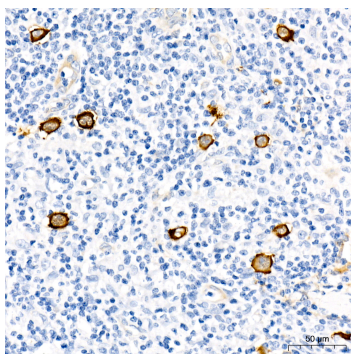
## Validation Data



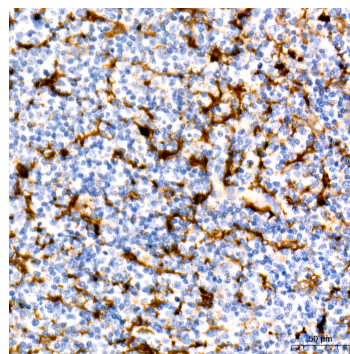
Western blot analysis of extracts of various cell lines, using Fascin/FSCN1 Rabbit mAb (A9566) at 1:1000 dilution.  
 Secondary antibody: HRP Goat Anti-Rabbit IgG (H+L) (AS014) at 1:10000 dilution.  
 Lysates/proteins: 25µg per lane.  
 Blocking buffer: 3% nonfat dry milk in TBST.  
 Detection: ECL Basic Kit (RM00020).  
 Exposure time: 1s.



Immunohistochemistry analysis of paraffin-embedded Human anaplastic large cell lymphoma using Fascin/FSCN1 Rabbit mAb (A9566) at dilution of 1:100 (40x lens). Perform microwave antigen retrieval with 10 mM Tris/EDTA buffer pH 9.0 before commencing with IHC staining protocol.



Immunohistochemistry analysis of paraffin-embedded Human Hodgkin lymphoma using Fascin/FSCN1 Rabbit mAb (A9566) at dilution of 1:100 (40x lens). Perform microwave antigen retrieval with 10 mM Tris/EDTA buffer pH 9.0 before commencing with IHC staining protocol.



Immunohistochemistry analysis of paraffin-embedded human tonsil using Fascin/FSCN1 Rabbit mAb (A9566) at dilution of 1:100 (40x lens). Perform microwave antigen retrieval with 10 mM Tris/EDTA buffer pH 9.0 before commencing with IHC staining protocol.