

A9562

Leader in Biomolecular Solutions for Life Science



## CYP2D6 Rabbit mAb

Catalog No.: A9562

Recombinant

1 Publications

### Basic Information

#### Observed MW

50kDa

#### Calculated MW

56kDa

#### Category

SMab Recombinant Monoclonal Antibody

#### Applications

WB,IF/ICC,ELISA

#### Cross-Reactivity

Human,Mouse,Rat

#### CloneNo number

ARC1635

### Background

This gene encodes a member of the cytochrome P450 superfamily of enzymes. The cytochrome P450 proteins are monooxygenases which catalyze many reactions involved in drug metabolism and synthesis of cholesterol, steroids and other lipids. This protein localizes to the endoplasmic reticulum and is known to metabolize as many as 25% of commonly prescribed drugs. Its substrates include antidepressants, antipsychotics, analgesics and antitussives, beta adrenergic blocking agents, antiarrhythmics and antiemetics. The gene is highly polymorphic in the human population; certain alleles result in the poor metabolizer phenotype, characterized by a decreased ability to metabolize the enzyme's substrates. Some individuals with the poor metabolizer phenotype have no functional protein since they carry 2 null alleles whereas in other individuals the gene is absent. This gene can vary in copy number and individuals with the ultrarapid metabolizer phenotype can have 3 or more active copies of the gene. Alternatively spliced transcript variants encoding different isoforms have been found for this gene.

### Recommended Dilutions

WB 1:1000 - 1:5000

IF/ICC 1:50 - 1:200

### Immunogen Information

#### Gene ID

1565

#### Swiss Prot

P10635

#### Immunogen

Recombinant fusion protein containing a sequence corresponding to amino acids 341-497 of human CYP2D6 (P10635).

#### Synonyms

CPD6; CYP2D; CYP2DL1; CYPID6; P450C2D; P450DB1; CYP2D7AP; CYP2D7BP; CYP2D7P2; CYP2D8P2; P450-DB1; CYP2D6

### Contact



[www.abclonal.com](http://www.abclonal.com)

### Product Information

#### Source

Rabbit

#### Isotype

IgG

#### Purification

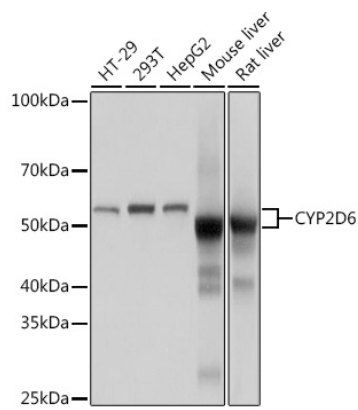
Affinity purification

#### Storage

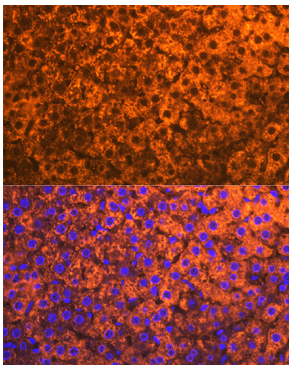
Store at -20°C. Avoid freeze / thaw cycles.

Buffer: PBS with 0.02% sodium azide,0.05% BSA,50% glycerol,pH7.3.

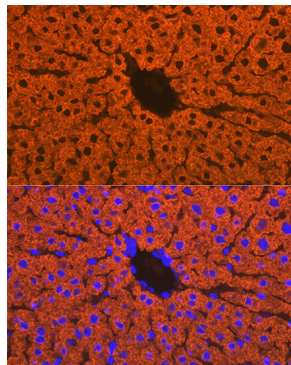
## Validation Data



Western blot analysis of extracts of various cell lines, using CYP2D6 Rabbit mAb (A9562) at 1:1000 dilution.  
Secondary antibody: HRP Goat Anti-Rabbit IgG (H+L) (AS014) at 1:10000 dilution.  
Lysates/proteins: 25µg per lane.  
Blocking buffer: 3% nonfat dry milk in TBST.  
Detection: ECL Basic Kit (RM00020).  
Exposure time: 1s.



Immunofluorescence analysis of rat liver using CYP2D6 Rabbit mAb (A9562) at dilution of 1:100 (40x lens). Blue: DAPI for nuclear staining.



Immunofluorescence analysis of mouse liver using CYP2D6 Rabbit mAb (A9562) at dilution of 1:100 (40x lens). Blue: DAPI for nuclear staining.