

# RPS20 Rabbit mAb

Catalog No.: A9551 **Recombinant**

## Basic Information

**Observed MW**

15kDa/

**Calculated MW**

13kDa

**Category**

Primary antibody

**Applications**

ELISA, WB, IHC-P, IF/ICC, IP

**Cross-Reactivity**

Human, Mouse, Rat

**CloneNo number**

ARC1630

## Recommended Dilutions

**WB** 1:500 - 1:1000**IHC-P** 1:500 - 1:1000**IF/ICC** 1:50 - 1:200**IP** 0.5µg-4µg antibody for  
200µg-400µg extracts of  
whole cells

## Contact

 | [www.abclonal.com](http://www.abclonal.com)

## Background

Ribosomes, the organelles that catalyze protein synthesis, consist of a small 40S subunit and a large 60S subunit. Together these subunits are composed of 4 RNA species and approximately 80 structurally distinct proteins. This gene encodes a ribosomal protein that is a component of the 40S subunit. The protein belongs to the S10P family of ribosomal proteins. It is located in the cytoplasm. This gene is co-transcribed with the small nucleolar RNA gene U54, which is located in its second intron. As is typical for genes encoding ribosomal proteins, there are multiple processed pseudogenes of this gene dispersed through the genome. Two transcript variants encoding different isoforms have been identified for this gene.

## Immunogen Information

**Gene ID**

6224

**Swiss Prot**

P60866

**Immunogen**

A synthetic peptide corresponding to a sequence within amino acids 1-100 of human RPS20 (P60866).

**Synonyms**

S20; uS10; RPS20

## Product Information

**Source**

Rabbit

**Isotype**

IgG

**Purification**

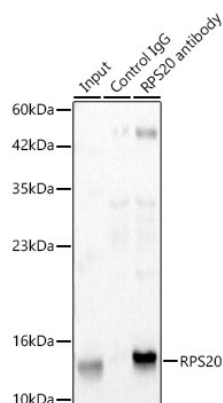
Affinity purification

**Storage**

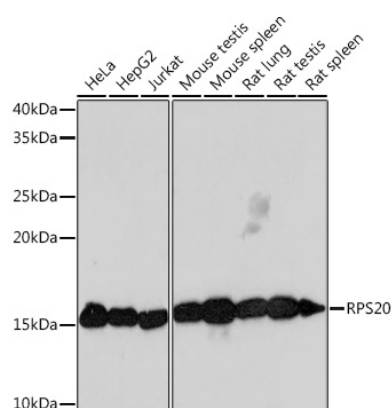
Store at -20°C. Avoid freeze / thaw cycles.

Buffer: PBS with 0.02% sodium azide, 0.05% BSA, 50% glycerol, pH7.3.

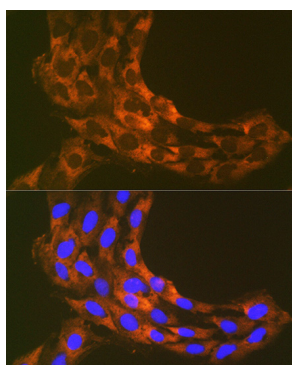
## Validation Data



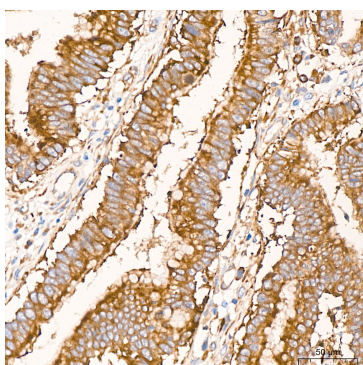
Immunoprecipitation of RPS20 in 300 µg extracts from Hep G2 cells using 3 µg RPS20 Rabbit mAb (A9551). Western blot analysis was performed using RPS20 Rabbit mAb (A9551) at 1:1000 dilution.



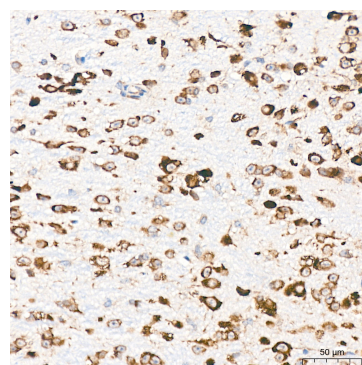
Western blot analysis of various lysates using RPS20 Rabbit mAb (A9551) at 1:1000 dilution. Secondary antibody: HRP Goat Anti-Rabbit IgG (H+L) (A5014) at 1:10000 dilution. Lysates/proteins: 25µg per lane. Blocking buffer: 3% nonfat dry milk in TBST. Detection: ECL Basic Kit (RM00020). Exposure time: 3min.



Immunofluorescence analysis of C6 cells using RPS20 Rabbit mAb (A9551) at dilution of 1:100 (40x lens). Secondary antibody: Cy3 Goat Anti-Rabbit IgG (H+L) (A5007) at 1:500 dilution. Blue: DAPI for nuclear staining.



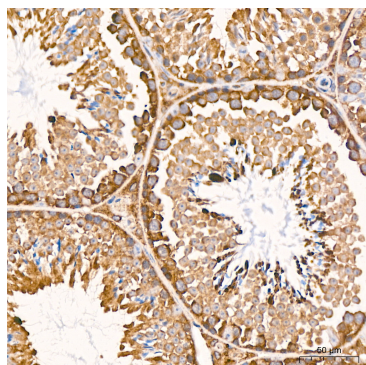
Immunohistochemistry analysis of RPS20 in paraffin-embedded human colon carcinoma tissue using RPS20 Rabbit mAb (A9551) at a dilution of 1:800 (40x lens). High pressure antigen retrieval was performed with 0.01 M citrate buffer (pH 6.0) prior to IHC staining.



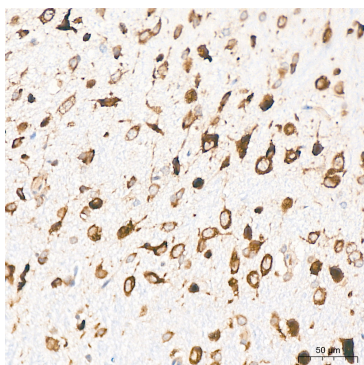
Immunohistochemistry analysis of RPS20 in paraffin-embedded mouse brain tissue using RPS20 Rabbit mAb (A9551) at a dilution of 1:800 (40x lens). High pressure antigen retrieval was performed with 0.01 M citrate buffer (pH 6.0) prior to IHC staining.

## Validation Data

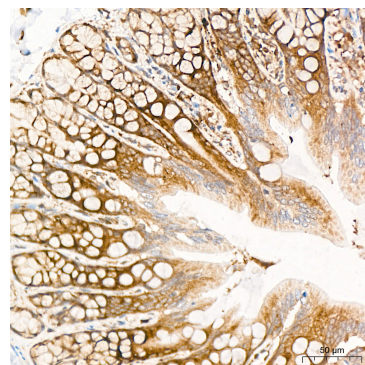
---



Immunohistochemistry analysis of RPS20 in paraffin-embedded mouse testis tissue using RPS20 Rabbit mAb (A9551) at a dilution of 1:800 (40x lens).High pressure antigen retrieval was performed with 0.01 M citrate buffer (pH 6.0) prior to IHC staining.



Immunohistochemistry analysis of RPS20 in paraffin-embedded rat brain tissue using RPS20 Rabbit mAb (A9551) at a dilution of 1:800 (40x lens).High pressure antigen retrieval was performed with 0.01 M citrate buffer (pH 6.0) prior to IHC staining.



Immunohistochemistry analysis of RPS20 in paraffin-embedded rat colon tissue using RPS20 Rabbit mAb (A9551) at a dilution of 1:800 (40x lens).High pressure antigen retrieval was performed with 0.01 M citrate buffer (pH 6.0) prior to IHC staining.