

A9538

Leader in Biomolecular Solutions for Life Science



AHA1 Rabbit mAb

Catalog No.: A9538

Recombinant

Basic Information

Observed MW

42kDa

Calculated MW

38kDa

Category

SMab Recombinant Monoclonal Antibody

Applications

WB, ELISA

Cross-Reactivity

Human, Mouse, Rat

CloneNo number

ARC1623

Background

Enables ATPase activator activity; Hsp90 protein binding activity; and chaperone binding activity. Involved in positive regulation of ATPase activity. Located in cytosol.

Recommended Dilutions

WB 1:500 - 1:2000

Immunogen Information

Gene ID

10598

Swiss Prot

O95433

Immunogen

A synthetic peptide corresponding to a sequence within amino acids 239-338 of human AHA1 (O95433).

Synonyms

p38; AHA1; hAha1; C14orf3

Contact



www.abclonal.com

Product Information

Source

Rabbit

Isotype

IgG

Purification

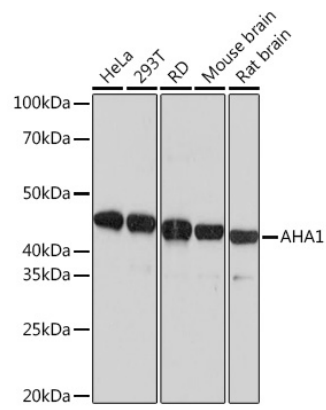
Affinity purification

Storage

Store at -20°C. Avoid freeze / thaw cycles.

Buffer: PBS with 0.02% sodium azide, 0.05% BSA, 50% glycerol, pH7.3.

Validation Data



Western blot analysis of extracts of various cell lines, using AHA1 Rabbit mAb (A9538) at 1:1000 dilution.
Secondary antibody: HRP Goat Anti-Rabbit IgG (H+L) (A5014) at 1:10000 dilution.
Lysates/proteins: 25µg per lane.
Blocking buffer: 3% nonfat dry milk in TBST.
Detection: ECL Basic Kit (RM00020).
Exposure time: 1s.