

A9497

Leader in Biomolecular Solutions for Life Science



IMPDH1 Rabbit pAb

Catalog No.: A9497

Basic Information

Observed MW

55kDa

Calculated MW

55kDa

Category

Mouse Monoclonal Antibody

Applications

WB,IF/ICC,ELISA

Cross-Reactivity

Human,Mouse,Rat

Background

The protein encoded by this gene acts as a homotetramer to regulate cell growth. The encoded protein is an enzyme that catalyzes the synthesis of xanthine monophosphate (XMP) from inosine-5'-monophosphate (IMP). This is the rate-limiting step in the de novo synthesis of guanine nucleotides. Defects in this gene are a cause of retinitis pigmentosa type 10 (RP10). Several transcript variants encoding different isoforms have been found for this gene.

Recommended Dilutions

WB 1:1000 - 1:2000

IF/ICC 1:50 - 1:200

Immunogen Information

Gene ID

3614

Swiss Prot

P20839

Immunogen

Recombinant fusion protein containing a sequence corresponding to amino acids 434-563 of human IMPDH1 (NP_899066.1).

Synonyms

IMPD; RP10; IMPD1; LCA11; IMPDH-I; sWSS2608; IMPDH1

Contact



www.abclonal.com

Product Information

Source

Rabbit

Isotype

IgG

Purification

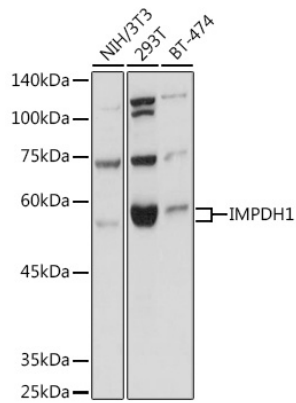
Affinity purification

Storage

Store at -20°C. Avoid freeze / thaw cycles.

Buffer: PBS with 0.02% sodium azide,50% glycerol,pH7.3.

Validation Data



Western blot analysis of extracts of various cell lines, using IMPDH1 Rabbit pAb (A9497) at 1:1000 dilution.

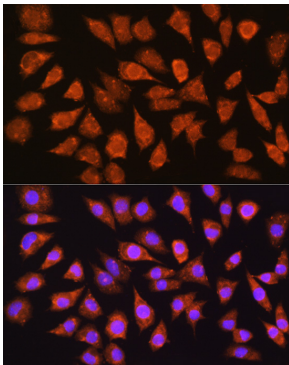
Secondary antibody: HRP Goat Anti-Rabbit IgG (H+L) (AS014) at 1:10000 dilution.

Lysates/proteins: 25µg per lane.

Blocking buffer: 3% nonfat dry milk in TBST.

Detection: ECL Basic Kit (RM00020).

Exposure time: 1s.



Immunofluorescence analysis of L929 cells using IMPDH1 Rabbit pAb (A9497) at dilution of 1:100 (40x lens). Blue: DAPI for nuclear staining.