

A9340

Leader in Biomolecular Solutions for Life Science



## LSR Rabbit pAb

Catalog No.: A9340

### Basic Information

**Observed MW**

60kDa

**Calculated MW**

71kDa

**Category**

Polyclonal Antibody

**Applications**

WB, ELISA

**Cross-Reactivity**

Human, Mouse, Rat

### Background

Predicted to be involved in several processes, including establishment of skin barrier; protein localization to tricellular tight junction; and tricellular tight junction assembly. Located in extracellular exosome.

### Recommended Dilutions

WB 1:500 - 1:2000

### Immunogen Information

**Gene ID**

51599

**Swiss Prot**

Q86X29

**Immunogen**

Recombinant fusion protein containing a sequence corresponding to amino acids 50-240 of human LSR (NP\_057009.3).

**Synonyms**

ILDR3; LISCH7; LSR

### Contact



[www.abclonal.com](http://www.abclonal.com)

### Product Information

**Source**

Rabbit

**Isotype**

IgG

**Purification**

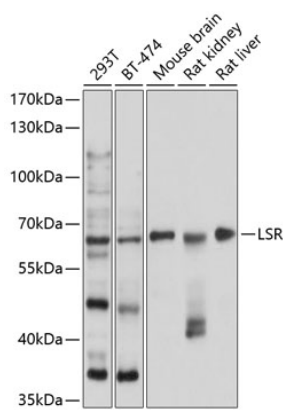
Affinity purification

**Storage**

Store at -20°C. Avoid freeze / thaw cycles.

Buffer: PBS with 0.02% sodium azide, 50% glycerol, pH 7.3.

# Validation Data



Western blot analysis of extracts of various cell lines, using LSR antibody (A9340) at 1:1000 dilution.  
Secondary antibody: HRP Goat Anti-Rabbit IgG (H+L) (A5014) at 1:10000 dilution.  
Lysates/proteins: 25µg per lane.  
Blocking buffer: 3% nonfat dry milk in TBST.  
Detection: ECL Basic Kit (RM00020).  
Exposure time: 10s.