

A9339

Leader in Biomolecular Solutions for Life Science



MUTA Rabbit mAb

Catalog No.: A9339

Recombinant

Basic Information

Observed MW

83kDa

Calculated MW

83kDa

Category

SMab Recombinant Monoclonal Antibody

Applications

WB, IHC-P, IF/ICC, ELISA

Cross-Reactivity

Human

CloneNo number

ARC2733

Background

This gene encodes the mitochondrial enzyme methylmalonyl Coenzyme A mutase. In humans, the product of this gene is a vitamin B12-dependent enzyme which catalyzes the isomerization of methylmalonyl-CoA to succinyl-CoA, while in other species this enzyme may have different functions. Mutations in this gene may lead to various types of methylmalonic aciduria.

Recommended Dilutions

WB	1:500 - 1:1000
IHC-P	1:50 - 1:200
IF/ICC	1:50 - 1:200

Immunogen Information

Gene ID

4594

Swiss Prot

P22033

Immunogen

A synthetic peptide corresponding to a sequence within amino acids 500-600 of human MUTA (P22033).

Synonyms

MCM; MUT; MUTA

Contact



www.abclonal.com

Product Information

Source

Rabbit

Isotype

IgG

Purification

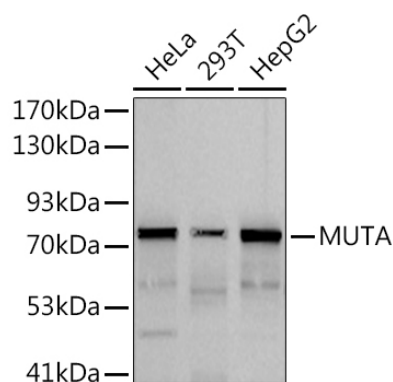
Affinity purification

Storage

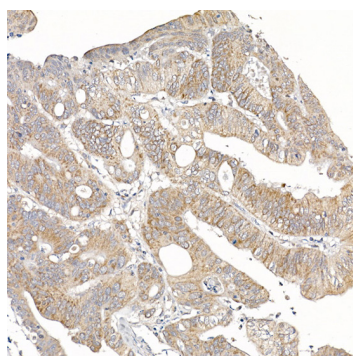
Store at -20°C. Avoid freeze / thaw cycles.

Buffer: PBS with 0.02% sodium azide, 0.05% BSA, 50% glycerol, pH7.3.

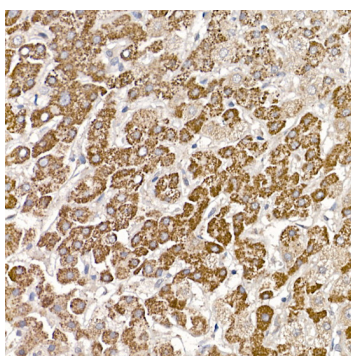
Validation Data



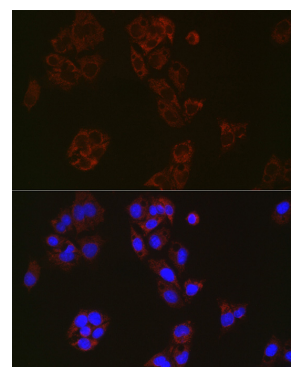
Western blot analysis of various lysates, using (A9339) at 1:1000 dilution.
Secondary antibody: HRP Goat Anti-Rabbit IgG (H+L) (A5014) at 1:10000 dilution.
Lysates/proteins: 25µg per lane.
Blocking buffer: 3% nonfat dry milk in TBST.
Detection: ECL Basic Kit (RM00020).
Exposure time: 90s.



Immunohistochemistry analysis of paraffin-embedded human colon carcinoma using Muta Rabbit mAb (A9339) at dilution of 1:100 (40x lens). Perform high pressure antigen retrieval with 10 mM citrate buffer pH 6.0 before commencing with IHC staining protocol.



Immunohistochemistry analysis of paraffin-embedded human liver using Muta Rabbit mAb (A9339) at dilution of 1:100 (40x lens). Perform high pressure antigen retrieval with 10 mM citrate buffer pH 6.0 before commencing with IHC staining protocol.



Immunofluorescence analysis of HepG2 cells using Muta antibody (A9339) at dilution of 1:150. Blue: DAPI for nuclear staining.