

CAMSAP2 Rabbit pAb

Catalog No.: A9315

Basic Information

Observed MW

189kDa

Calculated MW

168kDa

Category

Primary antibody

Applications

ELISA, WB

Cross-Reactivity

Human

Background

Enables microtubule minus-end binding activity. Involved in several processes, including axon development; regulation of dendrite development; and regulation of organelle organization. Located in cytosol and microtubule end. Colocalizes with Golgi apparatus; centrosome; and microtubule minus-end.

Recommended Dilutions

WB 1:500 - 1:2000

Immunogen Information

Gene ID

23271

Swiss Prot

Q08AD1

Immunogen

Recombinant fusion protein containing a sequence corresponding to amino acids 1-150 of human CAMSAP2 (NP_982284.1).

Synonyms

CAMSAP1L1; CAMSAP2

Contact

 | www.abclonal.com

Product Information

Source

Rabbit

Isotype

IgG

Purification

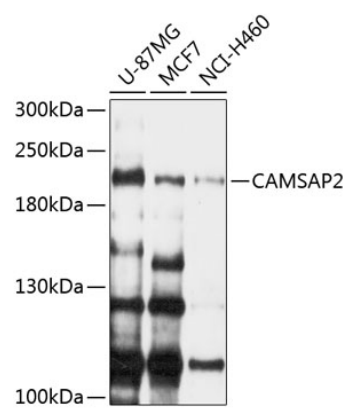
Affinity purification

Storage

Store at -20°C. Avoid freeze / thaw cycles.

Buffer: PBS with 0.02% sodium azide, 50% glycerol, pH7.3.

Validation Data



Western blot analysis of extracts of various cell lines, using CAMSAP2 Antibody (A9315) at 1:1000 dilution.
Secondary antibody: HRP Goat Anti-Rabbit IgG (H+L) (A5014) at 1:10000 dilution.
Lysates/proteins: 25µg per lane.
Blocking buffer: 3% nonfat dry milk in TBST.
Detection: ECL Enhanced Kit (RM00021).
Exposure time: 90s.