

A9297

Leader in Biomolecular Solutions for Life Science



## CPSF2 Rabbit pAb

Catalog No.: A9297

1 Publications

### Basic Information

#### Observed MW

110kDa

#### Calculated MW

88kDa

#### Category

Polyclonal Antibody

#### Applications

WB, ELISA

#### Cross-Reactivity

Human, Mouse, Rat

### Background

Predicted to enable RNA binding activity. Involved in mRNA 3'-end processing by stem-loop binding activity and cleavage. Located in membrane. Part of mRNA cleavage and polyadenylation specificity factor complex.

### Recommended Dilutions

WB 1:1000 - 1:2000

### Immunogen Information

#### Gene ID

53981

#### Swiss Prot

Q9P2I0

#### Immunogen

Recombinant fusion protein containing a sequence corresponding to amino acids 450-700 of human CPSF2 (NP\_059133.1).

#### Synonyms

CPSF100; CPSF2

### Contact



[www.abclonal.com](http://www.abclonal.com)

### Product Information

#### Source

Rabbit

#### Isotype

IgG

#### Purification

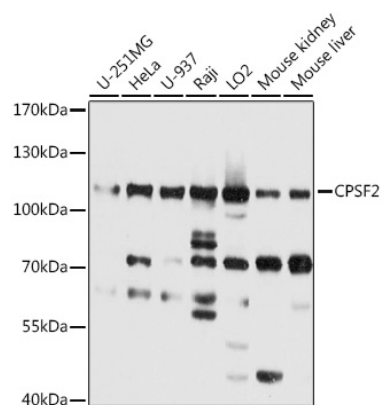
Affinity purification

#### Storage

Store at -20°C. Avoid freeze / thaw cycles.

Buffer: PBS with 0.01% thimerosal, 50% glycerol, pH7.3.

## Validation Data



Western blot analysis of various lysates using CPSF2 Rabbit pAb (A9297) at 1:2000 dilution.  
Secondary antibody: HRP Goat Anti-Rabbit IgG (H+L) (A5014) at 1:10000 dilution.  
Lysates/proteins: 25µg per lane.  
Blocking buffer: 3% nonfat dry milk in TBST.  
Detection: ECL Basic Kit (RM00020).  
Exposure time: 3s.