

A9293

Leader in Biomolecular Solutions for Life Science



Hemoglobin subunit alpha (HBA1) Rabbit mAb

Catalog No.: A9293

Recombinant

Basic Information

Observed MW

11kDa

Calculated MW

15kDa

Category

SMab Recombinant Monoclonal Antibody

Applications

WB,IHC-P,IF/ICC,ELISA

Cross-Reactivity

Human,Mouse,Rat

CloneNo number

ARC1510

Background

The human alpha globin gene cluster located on chromosome 16 spans about 30 kb and includes seven loci: 5'- zeta - pseudozeta - mu - pseudoalpha-1 - alpha-2 - alpha-1 - theta - 3'. The alpha-2 (HBA2) and alpha-1 (HBA1) coding sequences are identical. These genes differ slightly over the 5' untranslated regions and the introns, but they differ significantly over the 3' untranslated regions. Two alpha chains plus two beta chains constitute HbA, which in normal adult life comprises about 97% of the total hemoglobin; alpha chains combine with delta chains to constitute HbA-2, which with HbF (fetal hemoglobin) makes up the remaining 3% of adult hemoglobin. Alpha thalassemias result from deletions of each of the alpha genes as well as deletions of both HBA2 and HBA1; some nondeletion alpha thalassemias have also been reported.

Recommended Dilutions

WB	1:500 - 1:2000
IHC-P	1:50 - 1:200
IF/ICC	1:50 - 1:200

Immunogen Information

Gene ID

3039

Swiss Prot

P69905

Immunogen

A synthetic peptide corresponding to a sequence within amino acids 1-100 of human Hemoglobin subunit alpha (HBA1) (HBA1) (P69905).

Synonyms

HBH; ECYT7; HBA-T3; METHBA; Hemoglobin subunit alpha (HBA1)

Contact



www.abclonal.com

Product Information

Source

Rabbit

Isotype

IgG

Purification

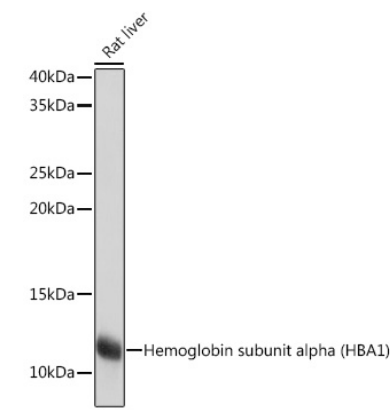
Affinity purification

Storage

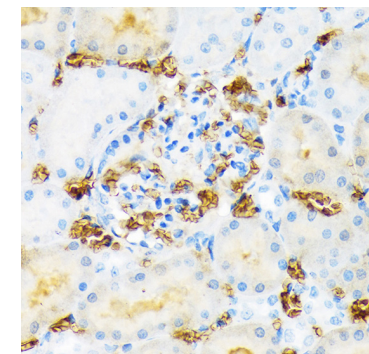
Store at -20°C. Avoid freeze / thaw cycles.

Buffer: PBS with 0.02% sodium azide,0.05% BSA,50% glycerol,pH7.3.

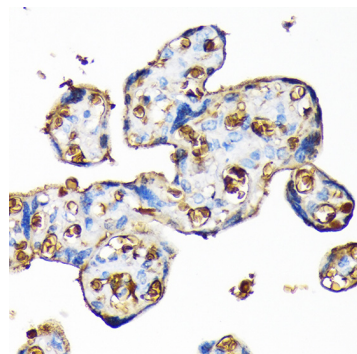
Validation Data



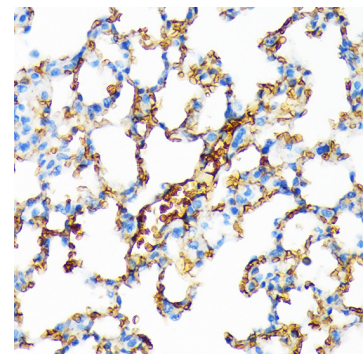
Western blot analysis of lysates from Rat liver, using Hemoglobin subunit alpha (HBA1) (HBA1) Rabbit mAb (A9293) at 1:1000 dilution.
Secondary antibody: HRP Goat Anti-Rabbit IgG (H+L) (AS014) at 1:10000 dilution.
Lysates/proteins: 25µg per lane.
Blocking buffer: 3% nonfat dry milk in TBST.
Detection: ECL Basic Kit (RM00020).
Exposure time: 1s.



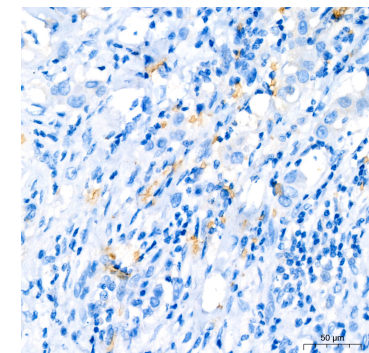
Immunohistochemistry analysis of Hemoglobin subunit alpha (HBA1) in paraffin-embedded rat kidney using Hemoglobin subunit alpha (HBA1) (HBA1) Rabbit mAb (A9293) at dilution of 1:100 (40x lens).Perform microwave antigen retrieval with 10 mM Tris/EDTA buffer pH 9.0 before commencing with IHC staining protocol.



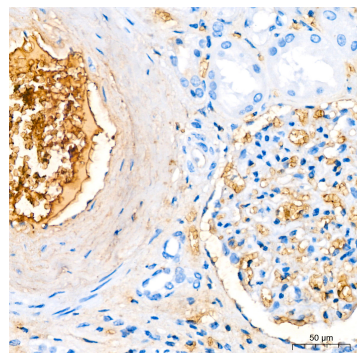
Immunohistochemistry analysis of Hemoglobin subunit alpha (HBA1) in paraffin-embedded blood cell staining in human placenta using Hemoglobin subunit alpha (HBA1) (HBA1) Rabbit mAb (A9293) at dilution of 1:100 (40x lens).Perform microwave antigen retrieval with 10 mM Tris/EDTA buffer pH 9.0 before commencing with IHC staining protocol.



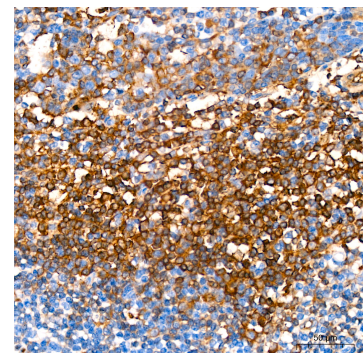
Immunohistochemistry analysis of Hemoglobin subunit alpha (HBA1) in paraffin-embedded blood cell staining in mouse lung using Hemoglobin subunit alpha (HBA1) (HBA1) Rabbit mAb (A9293) at dilution of 1:100 (40x lens).Perform microwave antigen retrieval with 10 mM Tris/EDTA buffer pH 9.0 before commencing with IHC staining protocol.



Immunohistochemistry analysis of Hemoglobin subunit alpha (HBA1) in paraffin-embedded human breast cancer using Hemoglobin subunit alpha (HBA1) Rabbit mAb (A9293) at dilution of 1:200 (40x lens).Perform high pressure antigen retrieval with 10 mM citrate buffer pH 6.0 before commencing with IHC staining protocol.

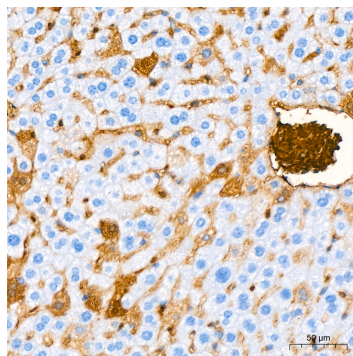


Immunohistochemistry analysis of Hemoglobin subunit alpha (HBA1) in paraffin-embedded human kidney using Hemoglobin subunit alpha (HBA1) Rabbit mAb (A9293) at dilution of 1:200 (40x lens).Perform high pressure antigen retrieval with 10 mM citrate buffer pH 6.0 before commencing with IHC staining protocol.

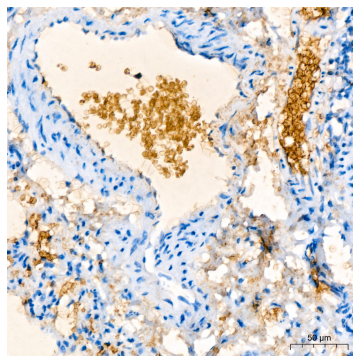


Immunohistochemistry analysis of Hemoglobin subunit alpha (HBA1) in paraffin-embedded human tonsil using Hemoglobin subunit alpha (HBA1) Rabbit mAb (A9293) at dilution of 1:200 (40x lens).Perform high pressure antigen retrieval with 10 mM citrate buffer pH 6.0 before commencing with IHC staining protocol.

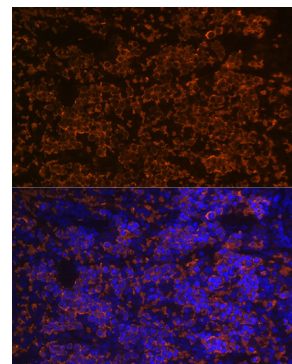
Validation Data



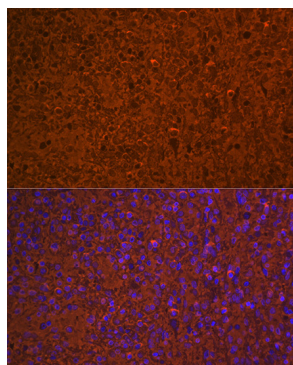
Immunohistochemistry analysis of Hemoglobin subunit alpha (HBA1) in paraffin-embedded mouse liver using Hemoglobin subunit alpha (HBA1) Rabbit mAb (A9293) at dilution of 1:200 (40x lens). Perform high pressure antigen retrieval with 10 mM citrate buffer pH 6.0 before commencing with IHC staining protocol.



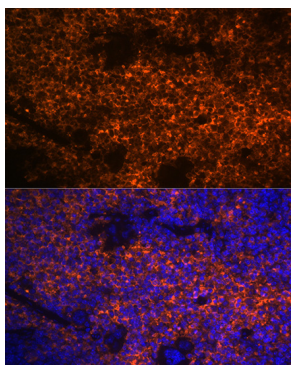
Immunohistochemistry analysis of Hemoglobin subunit alpha (HBA1) in paraffin-embedded rat lung using Hemoglobin subunit alpha (HBA1) Rabbit mAb (A9293) at dilution of 1:200 (40x lens). Perform high pressure antigen retrieval with 10 mM citrate buffer pH 6.0 before commencing with IHC staining protocol.



Immunofluorescence analysis of paraffin-embedded rat spleen using Hemoglobin subunit alpha (HBA1) (HBA1) Rabbit mAb (A9293) at dilution of 1:100 (40x lens). Secondary antibody: Cy3 Goat Anti-Rabbit IgG (H+L) (AS007) at 1:500 dilution. Blue: DAPI for nuclear staining.



Immunofluorescence analysis of paraffin-embedded human spleen using Hemoglobin subunit alpha (HBA1) (HBA1) Rabbit mAb (A9293) at dilution of 1:100 (40x lens). Secondary antibody: Cy3 Goat Anti-Rabbit IgG (H+L) (AS007) at 1:500 dilution. Blue: DAPI for nuclear staining.



Immunofluorescence analysis of paraffin-embedded mouse spleen using Hemoglobin subunit alpha (HBA1) (HBA1) Rabbit mAb (A9293) at dilution of 1:100 (40x lens). Secondary antibody: Cy3 Goat Anti-Rabbit IgG (H+L) (AS007) at 1:500 dilution. Blue: DAPI for nuclear staining.