

A9257

Leader in Biomolecular Solutions for Life Science



Ube2N/Ubc13 Rabbit mAb

Catalog No.: A9257

Recombinant

Basic Information

Observed MW

17kDa

Calculated MW

17kDa

Category

SMab Recombinant Monoclonal Antibody

Applications

WB,IHC-P,IF/ICC,ELISA

Cross-Reactivity

Human,Mouse,Rat

CloneNo number

ARC1495

Background

The modification of proteins with ubiquitin is an important cellular mechanism for targeting abnormal or short-lived proteins for degradation. Ubiquitination involves at least three classes of enzymes: ubiquitin-activating enzymes, or E1s, ubiquitin-conjugating enzymes, or E2s, and ubiquitin-protein ligases, or E3s. This gene encodes a member of the E2 ubiquitin-conjugating enzyme family. Studies in mouse suggest that this protein plays a role in DNA postreplication repair.

Recommended Dilutions

WB	1:500 - 1:1000
IHC-P	1:50 - 1:200
IF/ICC	1:50 - 1:200

Immunogen Information

Gene ID

7334

Swiss Prot

P61088

Immunogen

A synthetic peptide corresponding to a sequence within amino acids 1-100 of human Ube2N/Ubc13 (P61088).

Synonyms

UBC13; Ubch13; UBCHBEN; HEL-S-71; Ubch-ben; Ube2N/Ubc13

Contact



www.abclonal.com

Product Information

Source

Rabbit

Isotype

IgG

Purification

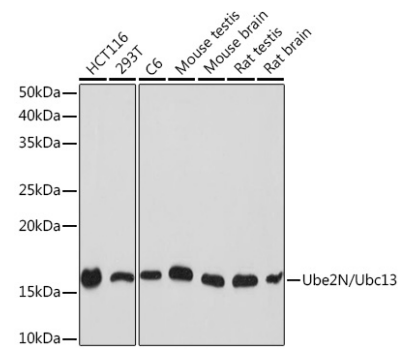
Affinity purification

Storage

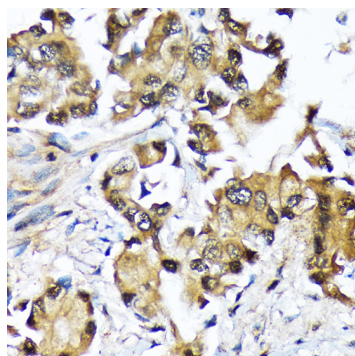
Store at -20°C. Avoid freeze / thaw cycles.

Buffer: PBS with 0.02% sodium azide,0.05% BSA,50% glycerol,pH7.3.

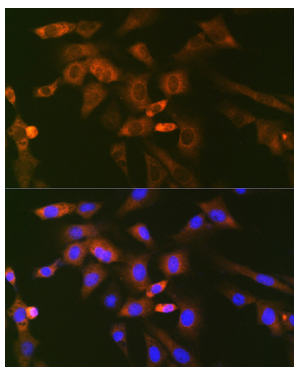
Validation Data



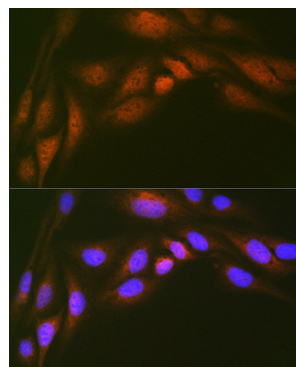
Western blot analysis of extracts of various cell lines, using Ube2N/Ubc13 Rabbit mAb (A9257) at 1:1000 dilution.
Secondary antibody: HRP Goat Anti-Rabbit IgG (H+L) (AS014) at 1:10000 dilution.
Lysates/proteins: 25µg per lane.
Blocking buffer: 3% nonfat dry milk in TBST.
Detection: ECL Basic Kit (RM00020).
Exposure time: 30s.



Immunohistochemistry analysis of paraffin-embedded human lung cancer using Ube2N/Ubc13 Rabbit mAb (A9257) at dilution of 1:100 (40x lens). Perform microwave antigen retrieval with 10 mM Tris/EDTA buffer pH 9.0 before commencing with IHC staining protocol.



Immunofluorescence analysis of NIH/3T3 cells using Ube2N/Ubc13 Rabbit mAb (A9257) at dilution of 1:100 (40x lens). Blue: DAPI for nuclear staining.



Immunofluorescence analysis of U-2 OS cells using Ube2N/Ubc13 Rabbit mAb (A9257) at dilution of 1:100 (40x lens). Blue: DAPI for nuclear staining.