

A9239

Leader in Biomolecular Solutions for Life Science



ROGDI Rabbit pAb

Catalog No.: A9239

Basic Information

Observed MW

32kDa

Calculated MW

32kDa

Category

Polyclonal Antibody

Applications

WB, ELISA

Cross-Reactivity

Mouse, Rat

Background

Involved in brain development; neurogenesis; and odontogenesis of dentin-containing tooth. Located in nuclear envelope. Implicated in Kohlschutter-Tonz syndrome.

Recommended Dilutions

WB 1:500 - 1:2000

Immunogen Information

Gene ID

79641

Swiss Prot

Q9GZN7

Immunogen

Recombinant fusion protein containing a sequence corresponding to amino acids 1-140 of human ROGDI (NP_078865.1).

Synonyms

KTZ5; RAV2; ROGDI1; ROGDI

Contact



www.abclonal.com

Product Information

Source

Rabbit

Isotype

IgG

Purification

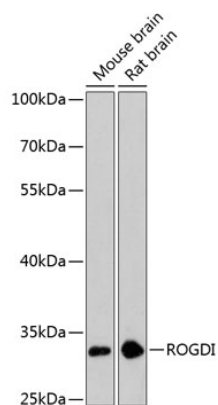
Affinity purification

Storage

Store at -20°C. Avoid freeze / thaw cycles.

Buffer: PBS with 0.01% thimerosal, 50% glycerol, pH 7.3.

Validation Data



Western blot analysis of various lysates using ROGDI Rabbit pAb (A9239) at 1:3000 dilution.
Secondary antibody: HRP Goat Anti-Rabbit IgG (H+L) (A5014) at 1:10000 dilution.
Lysates/proteins: 25µg per lane.
Blocking buffer: 3% nonfat dry milk in TBST.
Detection: ECL Basic Kit (RM00020).
Exposure time: 90s.