

A9237

Leader in Biomolecular Solutions for Life Science



RWDD1 Rabbit pAb

Catalog No.: A9237

Basic Information

Observed MW

28kDa

Calculated MW

28kDa

Category

Polyclonal Antibody

Applications

WB, ELISA

Cross-Reactivity

Mouse, Rat

Background

Predicted to be involved in several processes, including cellular response to lipid; cytoplasmic translation; and positive regulation of androgen receptor activity. Predicted to be located in cytoplasm. Predicted to be part of polysome.

Recommended Dilutions

WB 1:500 - 1:2000

Immunogen Information

Gene ID

51389

Swiss Prot

Q9H446

Immunogen

Recombinant fusion protein containing a sequence corresponding to amino acids 1-90 of human RWDD1 (NP_057036.2).

Synonyms

CGI-24; PTD013; RWDD1

Contact



www.abclonal.com

Product Information

Source

Rabbit

Isotype

IgG

Purification

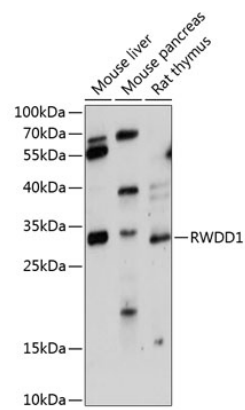
Affinity purification

Storage

Store at -20°C. Avoid freeze / thaw cycles.

Buffer: PBS with 0.01% thimerosal, 50% glycerol, pH 7.3.

Validation Data



Western blot analysis of various lysates using RWDD1 Rabbit pAb (A9237) at 1:3000 dilution.
Secondary antibody: HRP Goat Anti-Rabbit IgG (H+L) (AS014) at 1:10000 dilution.
Lysates/proteins: 25µg per lane.
Blocking buffer: 3% nonfat dry milk in TBST.
Detection: ECL Enhanced Kit (RM00021).
Exposure time: 90s.