

A9232

Leader in Biomolecular Solutions for Life Science



## TBC1D23 Rabbit pAb

Catalog No.: A9232

### Basic Information

**Observed MW**

78kDa

**Calculated MW**

78kDa

**Category**

Polyclonal Antibody

**Applications**

WB, ELISA

**Cross-Reactivity**

Human, Mouse

### Background

Involved in brain development; retrograde transport, endosome to Golgi; and vesicle tethering to Golgi. Located in cytoplasmic vesicle and trans-Golgi network. Colocalizes with WASH complex. Implicated in pontocerebellar hypoplasia.

### Recommended Dilutions

WB 1:500 - 1:2000

### Immunogen Information

**Gene ID**

55773

**Swiss Prot**

Q9NUY8

**Immunogen**

Recombinant fusion protein containing a sequence corresponding to amino acids 250-600 of human TBC1D23 (NP\_001186127.1).

**Synonyms**

PCH11; NS4ATP1; TBC1D23

### Contact



[www.abclonal.com](http://www.abclonal.com)

### Product Information

**Source**

Rabbit

**Isotype**

IgG

**Purification**

Affinity purification

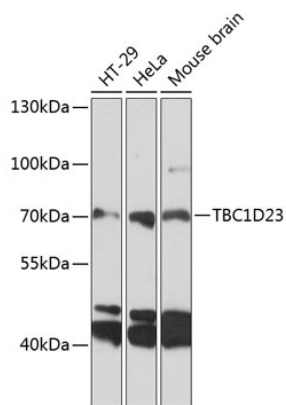
**Storage**

Store at -20°C. Avoid freeze / thaw cycles.

Buffer: PBS with 0.01% thimerosal, 50% glycerol, pH 7.3.

## Validation Data

---



Western blot analysis of various lysates using TBC1D23 Rabbit pAb (A9232) at 1:3000 dilution.  
Secondary antibody: HRP Goat Anti-Rabbit IgG (H+L) (A5014) at 1:10000 dilution.  
Lysates/proteins: 25µg per lane.  
Blocking buffer: 3% nonfat dry milk in TBST.  
Detection: ECL Basic Kit (RM00020).  
Exposure time: 60s.