

# [KO Validated] CTIP1/BCL11A Rabbit mAb

Catalog No.: A9231 **KO** **Validated** **Recombinant**

## Basic Information

### Observed MW

120kDa

### Calculated MW

91kDa

### Category

Primary antibody

### Applications

ELISA, WB, IHC-P

### Cross-Reactivity

Human

### CloneNo number

ARC1486

## Recommended Dilutions

**WB** 1:500 - 1:1000**IHC-P** 1:50 - 1:200

## Background

This gene encodes a C2H2 type zinc-finger protein by its similarity to the mouse Bcl11a/Evi9 protein. The corresponding mouse gene is a common site of retroviral integration in myeloid leukemia, and may function as a leukemia disease gene, in part, through its interaction with BCL6. During hematopoietic cell differentiation, this gene is down-regulated. It is possibly involved in lymphoma pathogenesis since translocations associated with B-cell malignancies also deregulates its expression. Multiple transcript variants encoding several different isoforms have been found for this gene.

## Immunogen Information

### Gene ID

53335

### Swiss Prot

Q9H165

### Immunogen

Recombinant fusion protein containing a sequence corresponding to amino acids 401-589 of human CTIP1/BCL11A (Q9H165).

### Synonyms

EVI9; CTIP1; DILOS; ZNF856; HBFQTL5; SMARCM1; 1A

## Contact

 | [www.abclonal.com](http://www.abclonal.com)

## Product Information

### Source

Rabbit

### Isotype

IgG

### Purification

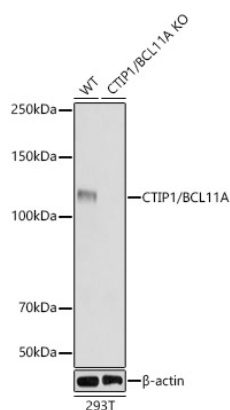
Affinity purification

### Storage

Store at -20°C. Avoid freeze / thaw cycles.

Buffer: PBS with 0.02% sodium azide, 0.05% BSA, 50% glycerol, pH7.3.

## Validation Data



Western blot analysis of extracts from wild type(WT) and CTIP1/BCL11A knockout (KO) 293T(KO) cells, using CTIP1/BCL11A Rabbit mAb (A9231) at 1:1000 dilution.

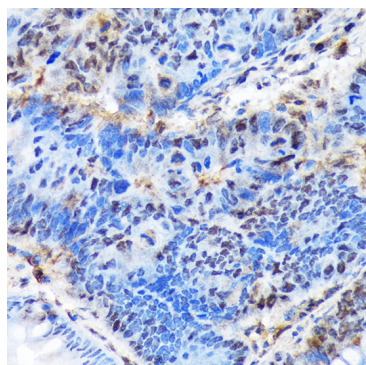
Secondary antibody: HRP Goat Anti-Rabbit IgG (H+L) (A5014) at 1:10000 dilution.

Lysates/proteins: 25 $\mu$ g per lane.

Blocking buffer: 3% nonfat dry milk in TBST.

Detection: ECL Basic Kit (RM00020).

Exposure time: 3s.



Immunohistochemistry analysis of paraffin-embedded human colon carcinoma using CTIP1/BCL11A Rabbit mAb (A9231) at dilution of 1:100 (40x lens). Perform microwave antigen retrieval with 10 mM Tris/EDTA buffer pH 9.0 before commencing with IHC staining protocol.