

C1QC Rabbit pAb

Catalog No.: A9227 **1 Publications**

Basic Information

Observed MW

26kDa

Calculated MW

26kDa

Category

Primary antibody

Applications

ELISA, WB, IHC-P

Cross-Reactivity

Human

Background

This gene encodes the C-chain polypeptide of serum complement subcomponent C1q, which associates with C1r and C1s to yield the first component of the serum complement system. C1q is composed of 18 polypeptide chains which include 6 A-chains, 6 B-chains, and 6 C-chains. Each chain contains an N-terminal collagen-like region and a C-terminal C1q globular domain. C1q deficiency is associated with lupus erythematosus and glomerulonephritis.

Recommended Dilutions

WB	1:500 - 1:2000
IHC-P	1:50 - 1:100

Immunogen Information

Gene ID

714

Swiss Prot

P02747

Immunogen

A synthetic peptide corresponding to a sequence within amino acids 50-150 of human C1QC (NP_001107573.1).

Synonyms

C1QG; C1Q-C; C1QD3; C1QC

Contact

 | www.abclonal.com

Product Information

Source

Rabbit

Isotype

IgG

Purification

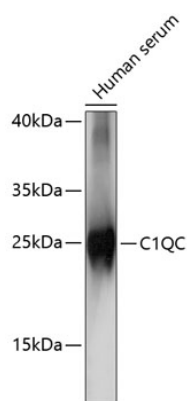
Affinity purification

Storage

Store at -20°C. Avoid freeze / thaw cycles.

Buffer: PBS with 0.01% thimerosal, 50% glycerol, pH7.3.

Validation Data



Western blot analysis of lysates from human serum, using C1QC Rabbit pAb (A9227) at 1:1000 dilution.

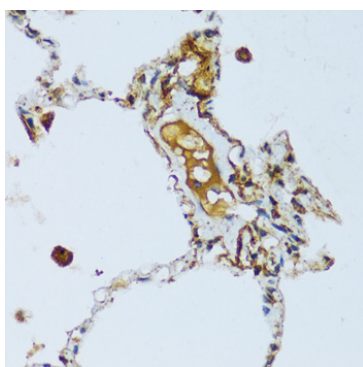
Secondary antibody: HRP Goat Anti-Rabbit IgG (H+L) (A5014) at 1:10000 dilution.

Lysates/proteins: 25µg per lane.

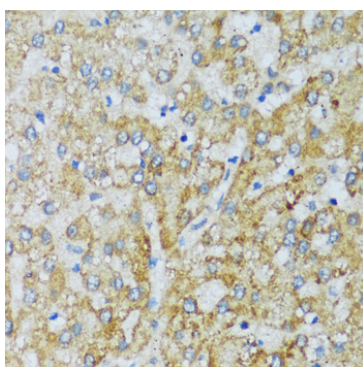
Blocking buffer: 3% nonfat dry milk in TBST.

Detection: ECL Basic Kit (RM00020).

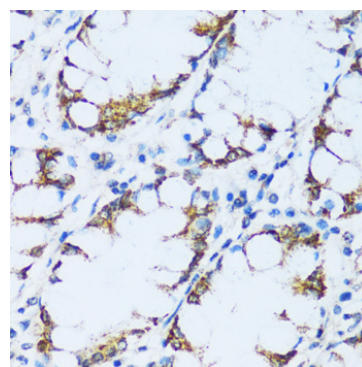
Exposure time: 5s.



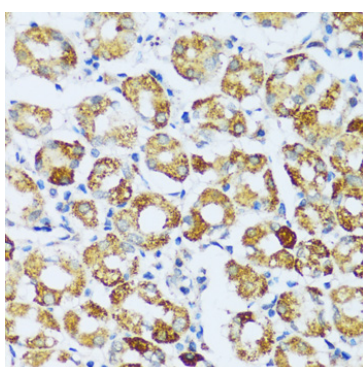
Immunohistochemistry analysis of C1QC in paraffin-embedded human lung using C1QC Rabbit pAb (A9227) at dilution of 1:100 (40x lens). Perform microwave antigen retrieval with 10 mM PBS buffer pH 7.2 before commencing with IHC staining protocol.



Immunohistochemistry analysis of C1QC in paraffin-embedded human liver using C1QC Rabbit pAb (A9227) at dilution of 1:100 (40x lens). Perform microwave antigen retrieval with 10 mM PBS buffer pH 7.2 before commencing with IHC staining protocol.



Immunohistochemistry analysis of C1QC in paraffin-embedded human colon using C1QC Rabbit pAb (A9227) at dilution of 1:100 (40x lens). Perform microwave antigen retrieval with 10 mM PBS buffer pH 7.2 before commencing with IHC staining protocol.



Immunohistochemistry analysis of C1QC in paraffin-embedded human stomach using C1QC Rabbit pAb (A9227) at dilution of 1:100 (40x lens). Perform microwave antigen retrieval with 10 mM PBS buffer pH 7.2 before commencing with IHC staining protocol.