

A9217

Leader in Biomolecular Solutions for Life Science



## METTL5 Rabbit pAb

Catalog No.: A9217

### Basic Information

**Observed MW**

24kDa

**Calculated MW**

24kDa

**Category**

Polyclonal Antibody

**Applications**

WB, ELISA

**Cross-Reactivity**

Human, Mouse, Rat

### Background

Enables S-adenosyl-L-methionine binding activity and rRNA (adenine-N6-)-methyltransferase activity. Involved in positive regulation of translation and rRNA methylation. Located in nucleus; postsynapse; and presynapse. Implicated in autosomal recessive intellectual developmental disorder-72.

### Recommended Dilutions

WB 1:500 - 1:2000

### Immunogen Information

**Gene ID**

29081

**Swiss Prot**

Q9NRN9

**Immunogen**

Recombinant fusion protein containing a sequence corresponding to amino acids 1-209 of human METTL5 (NP\_054887.2).

**Synonyms**

MRT72; HSPC133; METTL5

### Contact



[www.abclonal.com](http://www.abclonal.com)

### Product Information

**Source**

Rabbit

**Isotype**

IgG

**Purification**

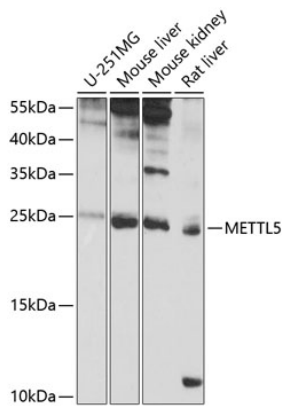
Affinity purification

**Storage**

Store at -20°C. Avoid freeze / thaw cycles.

Buffer: PBS with 0.02% sodium azide, 50% glycerol, pH 7.3.

Validation Data



Western blot analysis of extracts of various cell lines, using METTL5 antibody (A9217) at 1:1000 dilution.  
Secondary antibody: HRP Goat Anti-Rabbit IgG (H+L) (AS014) at 1:10000 dilution.  
Lysates/proteins: 25µg per lane.  
Blocking buffer: 3% nonfat dry milk in TBST.  
Detection: ECL Basic Kit (RM00020).  
Exposure time: 8s.