

A9152

Leader in Biomolecular Solutions for Life Science



14-3-3 beta/zeta Rabbit mAb

Catalog No.: A9152 **Recombinant**

Basic Information

Observed MW

28kDa

Calculated MW

28kDa

Category

SMab Recombinant Monoclonal Antibody

Applications

WB,IF/ICC,ELISA

Cross-Reactivity

Human,Mouse,Rat

CloneNo number

ARC1454

Background

This gene encodes a protein belonging to the 14-3-3 family of proteins, members of which mediate signal transduction by binding to phosphoserine-containing proteins. This highly conserved protein family is found in both plants and mammals. The encoded protein has been shown to interact with RAF1 and CDC25 phosphatases, suggesting that it may play a role in linking mitogenic signaling and the cell cycle machinery. Two transcript variants, which encode the same protein, have been identified for this gene. [provided by RefSeq, Jul 2008]

Recommended Dilutions

WB	1:500 - 1:1000
IF/ICC	1:50 - 1:200

Immunogen Information

Gene ID

7529/7534

Swiss Prot

P31946/P63104

Immunogen

A synthetic peptide corresponding to a sequence within amino acids 1-100 of human 14-3-3 beta/zeta (P31946).

Synonyms

GW128; HEL-S-1; HS1; KCIP-1; YWHAA; 14-3-3; 14-3-3 beta/zeta

Contact



www.abclonal.com

Product Information

Source

Rabbit

Isotype

IgG

Purification

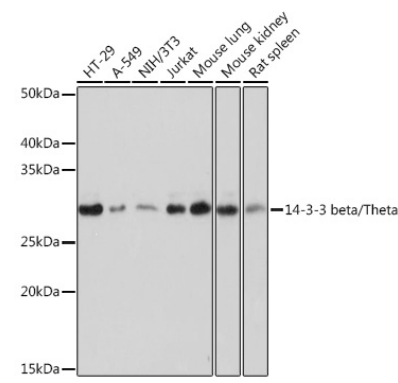
Affinity purification

Storage

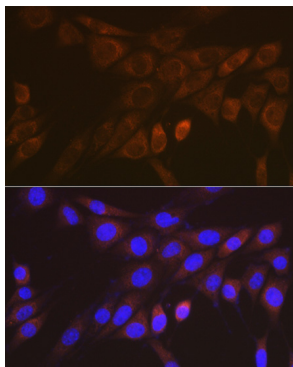
Store at -20°C. Avoid freeze / thaw cycles.

Buffer: PBS with 0.02% sodium azide,0.05% BSA,50% glycerol,pH7.3.

Validation Data



Western blot analysis of extracts of various cell lines, using 14-3-3 beta/zeta Rabbit mAb (A9152) at 1:1000 dilution.
Secondary antibody: HRP Goat Anti-Rabbit IgG (H+L) (AS014) at 1:10000 dilution.
Lysates/proteins: 25µg per lane.
Blocking buffer: 3% nonfat dry milk in TBST.
Detection: ECL Basic Kit (RM00020).
Exposure time: 1s.



Immunofluorescence analysis of NIH-3T3 cells using 14-3-3 beta/zeta Rabbit mAb (A9152) at dilution of 1:100 (40x lens). Blue: DAPI for nuclear staining.