

A9141

Leader in Biomolecular Solutions for Life Science



## RFK Rabbit pAb

Catalog No.: A9141

### Basic Information

**Observed MW**

14kDa

**Calculated MW**

18kDa

**Category**

Polyclonal Antibody

**Applications**

WB, ELISA

**Cross-Reactivity**

Human, Mouse

### Background

Riboflavin kinase (RFK; EC 2.7.1.26) is an essential enzyme that catalyzes the phosphorylation of riboflavin (vitamin B2) to form flavin mononucleotide (FMN), an obligatory step in vitamin B2 utilization and flavin cofactor synthesis (Karthikeyan et al., 2003 [PubMed 12623014]).

### Recommended Dilutions

WB 1:500 - 1:2000

### Immunogen Information

**Gene ID**

55312

**Swiss Prot**

Q969G6

**Immunogen**

Recombinant fusion protein containing a sequence corresponding to amino acids 1-155 of human RFK (NP\_060809.3).

**Synonyms**

RIFK; RFK

### Contact



[www.abclonal.com](http://www.abclonal.com)

### Product Information

**Source**

Rabbit

**Isotype**

IgG

**Purification**

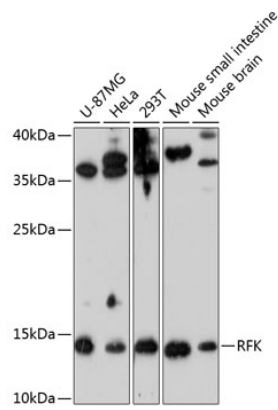
Affinity purification

**Storage**

Store at -20°C. Avoid freeze / thaw cycles.

Buffer: PBS with 0.01% thimerosal, 50% glycerol, pH 7.3.

# Validation Data



Western blot analysis of various lysates using RFK Rabbit pAb (A9141) at 1:3000 dilution.  
Secondary antibody: HRP Goat Anti-Rabbit IgG (H+L) (AS014) at 1:10000 dilution.  
Lysates/proteins: 25µg per lane.  
Blocking buffer: 3% nonfat dry milk in TBST.  
Detection: ECL Enhanced Kit (RM00021).  
Exposure time: 90s.