

A9128

Leader in Biomolecular Solutions for Life Science



## LGR6 Rabbit mAb

Catalog No.: A9128

Recombinant

### Basic Information

#### Observed MW

104kDa

#### Calculated MW

104kDa

#### Category

SMab Recombinant Monoclonal Antibody

#### Applications

WB,IF/ICC,ELISA

#### Cross-Reactivity

Human,Rat

#### CloneNo number

ARC1440

### Background

This gene encodes a member of the leucine-rich repeat-containing subgroup of the G protein-coupled 7-transmembrane protein superfamily. The encoded protein is a glycoprotein hormone receptor with a large N-terminal extracellular domain that contains leucine-rich repeats important for the formation of a horseshoe-shaped interaction motif for ligand binding. Alternative splicing of this gene results in multiple transcript variants.

### Recommended Dilutions

WB 1:500 - 1:2000

IF/ICC 1:50 - 1:200

### Immunogen Information

#### Gene ID

59352

#### Swiss Prot

Q9HBX8

#### Immunogen

A synthetic peptide corresponding to a sequence within amino acids 801-900 of human LGR6 (Q9HBX8).

#### Synonyms

GPCR; VTS20631; LGR6

### Contact



[www.abclonal.com](http://www.abclonal.com)

### Product Information

#### Source

Rabbit

#### Isotype

IgG

#### Purification

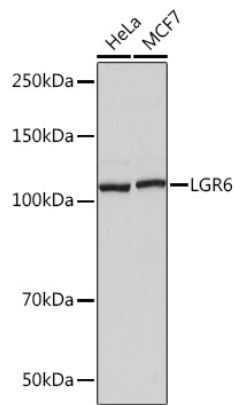
Affinity purification

#### Storage

Store at -20°C. Avoid freeze / thaw cycles.

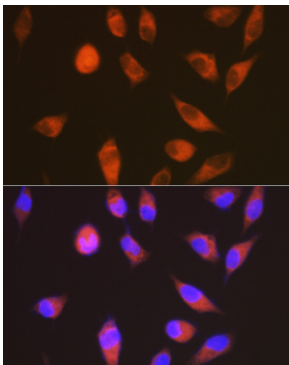
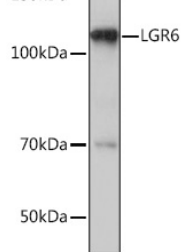
Buffer: PBS with 0.02% sodium azide,0.05% BSA,50% glycerol,pH7.3.

## Validation Data



Western blot analysis of extracts of various cell lines, using LGR6 Rabbit mAb (A9128) at 1:1000 dilution.  
Secondary antibody: HRP Goat Anti-Rabbit IgG (H+L) (AS014) at 1:10000 dilution.  
Lysates/proteins: 25µg per lane.  
Blocking buffer: 3% nonfat dry milk in TBST.  
Detection: ECL Basic Kit (RM00020).  
Exposure time: 3s.

Western blot analysis of extracts of Rat testis, using LGR6 Rabbit mAb (A9128) at 1:1000 dilution.  
Secondary antibody: HRP Goat Anti-Rabbit IgG (H+L) (AS014) at 1:10000 dilution.  
Lysates/proteins: 25µg per lane.  
Blocking buffer: 3% nonfat dry milk in TBST.  
Detection: ECL Basic Kit (RM00020).  
Exposure time: 30s.



Immunofluorescence analysis of HeLa cells using LGR6 Rabbit mAb (A9128) at dilution of 1:100 (40x lens). Blue: DAPI for nuclear staining.