

A9110

Leader in Biomolecular Solutions for Life Science



## SMU1 Rabbit pAb

Catalog No.: A9110

### Basic Information

**Observed MW**

50kDa

**Calculated MW**

58kDa

**Category**

Polyclonal Antibody

**Applications**

WB, ELISA

**Cross-Reactivity**

Human, Mouse, Rat

### Background

Involved in mRNA splicing, via spliceosome. Located in nucleus. Part of U2-type precatalytic spliceosome.

### Recommended Dilutions

WB 1:200 - 1:2000

### Immunogen Information

**Gene ID**

55234

**Swiss Prot**

Q2TAY7

**Immunogen**

Recombinant fusion protein containing a sequence corresponding to amino acids 1-220 of human SMU1 (NP\_060695.2).

**Synonyms**

BWD; SMU-1; fSAP57; SMU1

### Contact



[www.abclonal.com](http://www.abclonal.com)

### Product Information

**Source**

Rabbit

**Isotype**

IgG

**Purification**

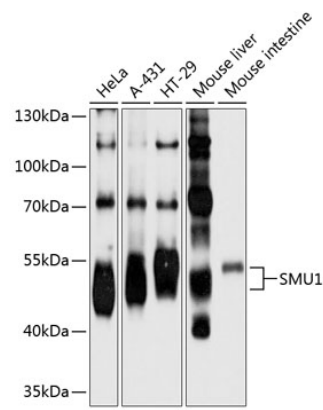
Affinity purification

**Storage**

Store at -20°C. Avoid freeze / thaw cycles.

Buffer: PBS with 0.01% thimerosal, 50% glycerol, pH7.3.

Validation Data



Western blot analysis of various lysates using SMU1 Rabbit pAb (A9110) at 1:1000 dilution.  
Secondary antibody: HRP Goat Anti-Rabbit IgG (H+L) (A5014) at 1:10000 dilution.  
Lysates/proteins: 25µg per lane.  
Blocking buffer: 3% nonfat dry milk in TBST.  
Detection: ECL Basic Kit (RM00020).  
Exposure time: 10s.