

# GPM6A Rabbit pAb

Catalog No.: A9066 **1 Publications**

## Basic Information

### Observed MW

31kDa

### Calculated MW

31kDa

### Category

Primary antibody

### Applications

ELISA, WB, IHC-P

### Cross-Reactivity

Human, Mouse

## Background

Predicted to enable calcium channel activity. Involved in neuron migration and stem cell differentiation. Located in extracellular exosome.

## Recommended Dilutions

WB	1:500 - 1:2000
IHC-P	1:50 - 1:200

## Immunogen Information

Gene ID	Swiss Prot
2823	P51674

### Immunogen

A synthetic peptide corresponding to a sequence within amino acids 1-100 of human GPM6A (NP\_005268.1).

### Synonyms

M6A; GPM6; GPM6A

## Contact

 | [www.abclonal.com](http://www.abclonal.com)

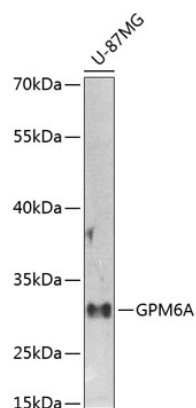
## Product Information

Source	Isotype	Purification
Rabbit	IgG	Affinity purification

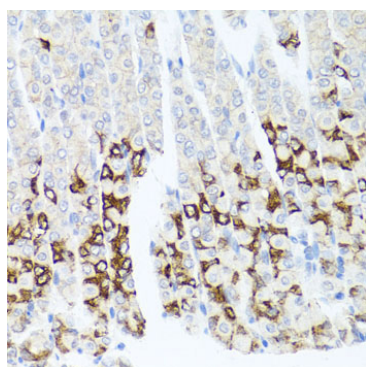
### Storage

Store at -20°C. Avoid freeze / thaw cycles.  
Buffer: PBS with 0.02% sodium azide, 50% glycerol, pH7.3.

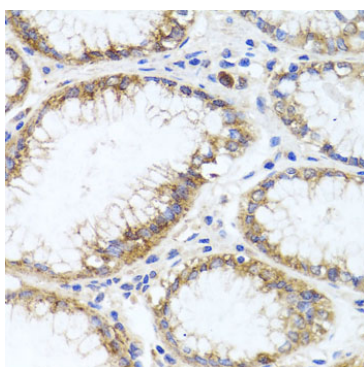
## Validation Data



Western blot analysis of extracts of U-87MG cells, using GPM6A antibody (A9066) at 1:1000 dilution.  
Secondary antibody: HRP Goat Anti-Rabbit IgG (H+L) (A5014) at 1:10000 dilution.  
Lysates/proteins: 25µg per lane.  
Blocking buffer: 3% nonfat dry milk in TBST.  
Detection: ECL Enhanced Kit (RM00021).  
Exposure time: 30s.



Immunohistochemistry analysis of paraffin-embedded mouse stomach using GPM6A antibody (A9066) at dilution of 1:100 (40x lens). Perform microwave antigen retrieval with 10 mM PBS buffer pH 7.2 before commencing with IHC staining protocol.



Immunohistochemistry analysis of paraffin-embedded human stomach using GPM6A antibody (A9066) at dilution of 1:100 (40x lens). Perform microwave antigen retrieval with 10 mM PBS buffer pH 7.2 before commencing with IHC staining protocol.