

A9061

Leader in Biomolecular Solutions for Life Science



MCTS1 Rabbit pAb

Catalog No.: A9061

2 Publications

Basic Information

Observed MW

20kDa

Calculated MW

21kDa

Category

Polyclonal Antibody

Applications

WB,IF/ICC,ELISA

Cross-Reactivity

Human,Mouse,Rat

Background

Predicted to enable translation initiation factor activity. Involved in IRES-dependent viral translational initiation; formation of translation preinitiation complex; and ribosome disassembly. Located in cytosol and plasma membrane. Colocalizes with cytosolic small ribosomal subunit.

Recommended Dilutions

WB 1:500 - 1:2000

IF/ICC 1:50 - 1:200

Immunogen Information

Gene ID

28985

Swiss Prot

Q9ULC4

Immunogen

Recombinant fusion protein containing a sequence corresponding to amino acids 1-181 of human MCTS1 (NP_054779.1).

Synonyms

MCT1; MCT-1; MCTS1

Contact



www.abclonal.com

Product Information

Source

Rabbit

Isotype

IgG

Purification

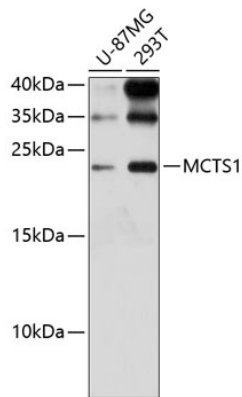
Affinity purification

Storage

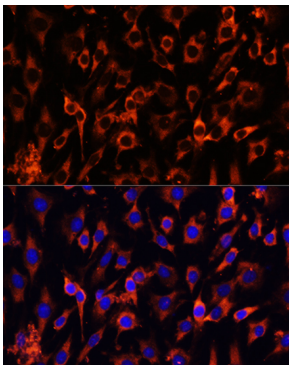
Store at -20°C. Avoid freeze / thaw cycles.

Buffer: PBS with 0.01% thimerosal,50% glycerol,pH7.3.

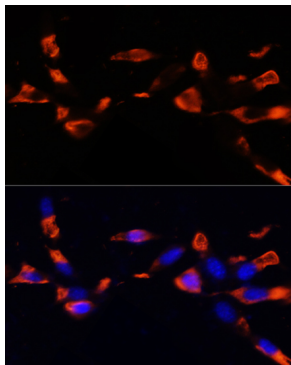
Validation Data



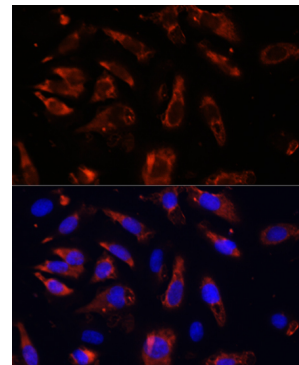
Western blot analysis of various lysates using MCTS1 Rabbit pAb (A9061) at 1:3000 dilution.
Secondary antibody: HRP Goat Anti-Rabbit IgG (H+L) (A5014) at 1:10000 dilution.
Lysates/proteins: 25µg per lane.
Blocking buffer: 3% nonfat dry milk in TBST.
Detection: ECL Enhanced Kit (RM00021).
Exposure time: 90s.



Immunofluorescence analysis of C6 cells using MCTS1 Rabbit pAb (A9061) at dilution of 1:100 (40x lens). Blue: DAPI for nuclear staining.



Immunofluorescence analysis of NIH/3T3 cells using MCTS1 Rabbit pAb (A9061) at dilution of 1:100 (40x lens). Blue: DAPI for nuclear staining.



Immunofluorescence analysis of U-2OS cells using MCTS1 Rabbit pAb (A9061) at dilution of 1:100 (40x lens). Blue: DAPI for nuclear staining.