

A9058

Leader in Biomolecular Solutions for Life Science



KAT13A / SRC1 Rabbit mAb

Catalog No.: A9058

Recombinant

Basic Information

Observed MW

180kDa

Calculated MW

157kDa

Category

SMab Recombinant Monoclonal Antibody

Applications

WB,IP,ELISA

Cross-Reactivity

Human

CloneNo number

ARC1395

Background

The protein encoded by this gene acts as a transcriptional coactivator for steroid and nuclear hormone receptors. It is a member of the p160/steroid receptor coactivator (SRC) family and like other family members has histone acetyltransferase activity and contains a nuclear localization signal, as well as bHLH and PAS domains. The product of this gene binds nuclear receptors directly and stimulates the transcriptional activities in a hormone-dependent fashion. Alternatively spliced transcript variants encoding different isoforms have been identified.

Recommended Dilutions

WB 1:500 - 1:1000

IP 0.5µg-4µg antibody for
200µg-400µg extracts of
whole cells

Immunogen Information

Gene ID

8648

Swiss Prot

Q15788

Immunogen

Recombinant fusion protein containing a sequence corresponding to amino acids 400-750 of human KAT13A / SRC1 (Q15788).

Synonyms

SRC1; KAT13A; RIP160; F-SRC-1; bHLHe42; bHLHe74; KAT13A / SRC1

Contact



www.abclonal.com

Product Information

Source

Rabbit

Isotype

IgG

Purification

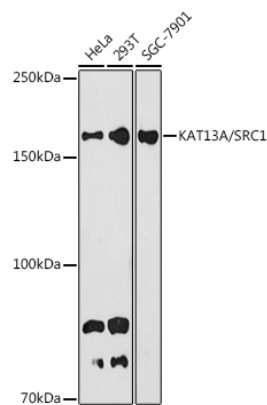
Affinity purification

Storage

Store at -20°C. Avoid freeze / thaw cycles.

Buffer: PBS with 0.02% sodium azide, 0.05% BSA, 50% glycerol, pH7.3.

Validation Data



Western blot analysis of various lysates using KAT13A / SRC1 Rabbit mAb (A9058) at 1:1000 dilution.
Secondary antibody: HRP Goat Anti-Rabbit IgG (H+L) (AS014) at 1:10000 dilution.
Lysates/proteins: 25µg per lane.
Blocking buffer: 3% nonfat dry milk in TBST.
Detection: ECL Basic Kit (RM00020).
Exposure time: 180s.

Immunoprecipitation analysis of 300 µg extracts of 293T cells using 3 µg KAT13A/SRC1 antibody (A9058).
Western blot was performed from the immunoprecipitate using KAT13A/SRC1 antibody (A9058) at a dilution of 1:1000.

