

A9053

Leader in Biomolecular Solutions for Life Science



PGE receptor EP2 (PTGER2) Rabbit mAb

Catalog No.: A9053

Recombinant

Basic Information

Observed MW

52kDa

Calculated MW

40kDa

Category

SMab Recombinant Monoclonal Antibody

Applications

WB, IHC-P, IF/ICC, ELISA

Cross-Reactivity

Human, Mouse, Rat

CloneNo number

ARC1393

Background

This gene encodes a receptor for prostaglandin E2, a metabolite of arachidonic acid which has different biologic activities in a wide range of tissues. Mutations in this gene are associated with aspirin-induced susceptibility to asthma.

Recommended Dilutions

WB	1:500 - 1:2000
IHC-P	1:50 - 1:200
IF/ICC	1:50 - 1:200

Immunogen Information

Gene ID

5732

Swiss Prot

P43116

Immunogen

A synthetic peptide corresponding to a sequence within amino acids 259-358 of human PGE receptor EP2 (PTGER2) (P43116).

Synonyms

EP2; PGE receptor EP2 (PTGER2)

Contact



www.abclonal.com

Product Information

Source

Rabbit

Isotype

IgG

Purification

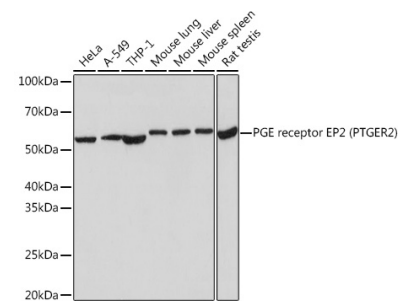
Affinity purification

Storage

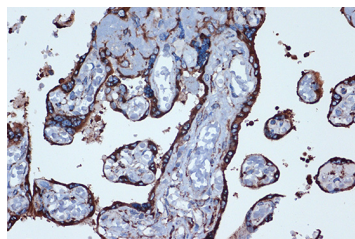
Store at -20°C. Avoid freeze / thaw cycles.

Buffer: PBS with 0.02% sodium azide, 0.05% BSA, 50% glycerol, pH7.3.

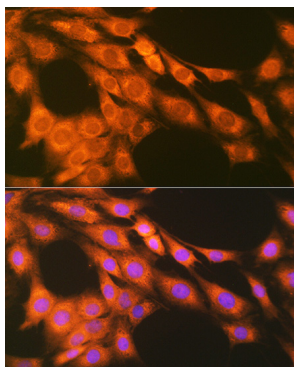
Validation Data



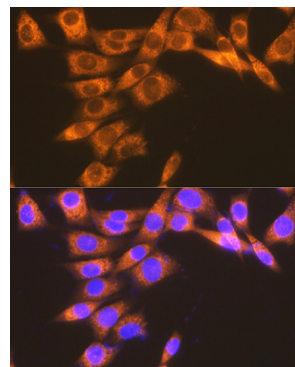
Western blot analysis of extracts of various cell lines, using PGE Receptor EP2 (PGE Receptor EP2 (PGE receptor EP2 (PTGER2))) Rabbit mAb (A9053) at 1:1000 dilution. Secondary antibody: HRP Goat Anti-Rabbit IgG (H+L) (AS014) at 1:10000 dilution. Lysates/proteins: 25µg per lane. Blocking buffer: 3% nonfat dry milk in TBST. Detection: ECL Basic Kit (RM00020). Exposure time: 3s.



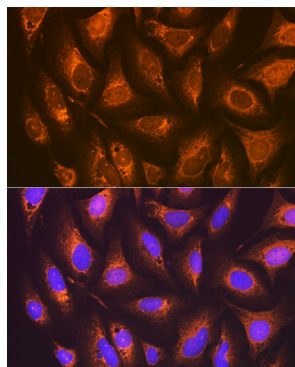
Immunohistochemistry analysis of paraffin-embedded human placenta using PGE Receptor EP2 (PGE Receptor EP2 (PGE receptor EP2 (PTGER2))) Rabbit mAb (A9053) at dilution of 1:100 (40x lens). Perform microwave antigen retrieval with 10 mM Tris/EDTA buffer pH 9.0 before commencing with IHC staining protocol.



Immunofluorescence analysis of C6 cells using PGE Receptor EP2 (PGE Receptor EP2 (PGE receptor EP2 (PTGER2))) Rabbit mAb (A9053) at dilution of 1:100 (40x lens). Blue: DAPI for nuclear staining.



Immunofluorescence analysis of NIH-3T3 cells using PGE Receptor EP2 (PGE Receptor EP2 (PGE receptor EP2 (PTGER2))) Rabbit mAb (A9053) at dilution of 1:100 (40x lens). Blue: DAPI for nuclear staining.



Immunofluorescence analysis of U-2 OS cells using PGE Receptor EP2 (PGE Receptor EP2 (PGE receptor EP2 (PTGER2))) Rabbit mAb (A9053) at dilution of 1:100 (40x lens). Blue: DAPI for nuclear staining.