

A8984

Leader in Biomolecular Solutions for Life Science



CHST15 Rabbit pAb

Catalog No.: A8984

Basic Information

Observed MW

80kDa

Calculated MW

65kDa

Category

Polyclonal Antibody

Applications

WB, ELISA

Cross-Reactivity

Human, Rat

Background

Chondroitin sulfate (CS) is a glycosaminoglycan which is an important structural component of the extracellular matrix and which links to proteins to form proteoglycans. Chondroitin sulfate E (CS-E) is an isomer of chondroitin sulfate in which the C-4 and C-6 hydroxyl groups are sulfated. This gene encodes a type II transmembrane glycoprotein that acts as a sulfotransferase to transfer sulfate to the C-6 hydroxyl group of chondroitin sulfate. This gene has also been identified as being co-expressed with RAG1 in B-cells and as potentially acting as a B-cell surface signaling receptor. Alternative splicing results in multiple transcript variants encoding distinct isoforms.

Recommended Dilutions

WB 1:500 - 1:2000

Immunogen Information

Gene ID

51363

Swiss Prot

Q7LFX5

Immunogen

Recombinant fusion protein containing a sequence corresponding to amino acids 452-561 of human CHST15 (NP_056976.2).

Synonyms

BRAG; GALNAC4S-6ST; CHST15

Contact



www.abclonal.com

Product Information

Source

Rabbit

Isotype

IgG

Purification

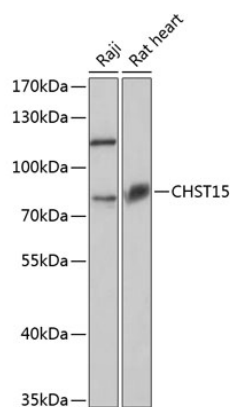
Affinity purification

Storage

Store at -20°C. Avoid freeze / thaw cycles.

Buffer: PBS with 0.01% thimerosal, 50% glycerol, pH7.3.

Validation Data



Western blot analysis of various lysates using CHST15 Rabbit pAb (A8984) at 1:3000 dilution.
Secondary antibody: HRP Goat Anti-Rabbit IgG (H+L) (A5014) at 1:10000 dilution.
Lysates/proteins: 25µg per lane.
Blocking buffer: 3% nonfat dry milk in TBST.
Detection: ECL Basic Kit (RM00020).
Exposure time: 90s.