

A8967

Leader in Biomolecular Solutions for Life Science



## SSFA2 Rabbit pAb

Catalog No.: A8967

### Basic Information

**Observed MW**

180kDa

**Calculated MW**

138kDa

**Category**

Polyclonal Antibody

**Applications**

WB, ELISA

**Cross-Reactivity**

Mouse

### Background

Enables actin filament binding activity. Located in cytosol; nucleoplasm; and plasma membrane.

### Recommended Dilutions

WB 1:500 - 1:2000

### Immunogen Information

**Gene ID**

6744

**Swiss Prot**

P28290

**Immunogen**

Recombinant fusion protein containing a sequence corresponding to amino acids 1000-1259 of human SSFA2 (NP\_001123917.1).

**Synonyms**

CS1; CS-1; KRAP; SSFA2; SPAG13

### Contact



[www.abclonal.com](http://www.abclonal.com)

### Product Information

**Source**

Rabbit

**Isotype**

IgG

**Purification**

Affinity purification

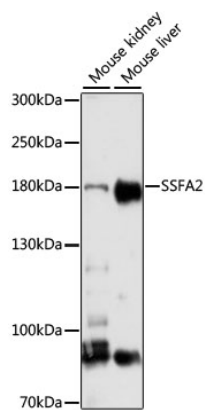
**Storage**

Store at -20°C. Avoid freeze / thaw cycles.

Buffer: PBS with 0.01% thimerosal, 50% glycerol, pH 7.3.

## Validation Data

---



Western blot analysis of various lysates using SSFA2 Rabbit pAb (A8967) at 1:3000 dilution.  
Secondary antibody: HRP Goat Anti-Rabbit IgG (H+L) (A5014) at 1:10000 dilution.  
Lysates/proteins: 25µg per lane.  
Blocking buffer: 3% nonfat dry milk in TBST.  
Detection: ECL Enhanced Kit (RM00021).  
Exposure time: 1s.