

A8912

Leader in Biomolecular Solutions for Life Science



Glycogen synthase 1 (GYS1) Rabbit mAb

Catalog No.: A8912

Recombinant

1 Publications

Basic Information

Observed MW

85kDa

Calculated MW

84kDa

Category

SMab Recombinant Monoclonal Antibody

Applications

WB, ELISA

Cross-Reactivity

Human, Mouse, Rat

CloneNo number

ARC1350

Background

The protein encoded by this gene catalyzes the addition of glucose monomers to the growing glycogen molecule through the formation of alpha-1,4-glycoside linkages. Mutations in this gene are associated with muscle glycogen storage disease. Alternatively spliced transcript variants encoding different isoforms have been found for this gene.

Recommended Dilutions

WB 1:500 - 1:1000

Immunogen Information

Gene ID

2997

Swiss Prot

P13807

Immunogen

A synthetic peptide corresponding to a sequence within amino acids 638-737 of human Glycogen synthase (P13807).

Synonyms

GSY; GYS; Glycogen synthase 1 (GYS1)

Contact



www.abclonal.com

Product Information

Source

Rabbit

Isotype

IgG

Purification

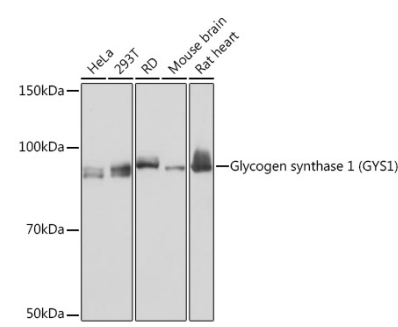
Affinity purification

Storage

Store at -20°C. Avoid freeze / thaw cycles.

Buffer: PBS with 0.02% sodium azide, 0.05% BSA, 50% glycerol, pH7.3.

Validation Data



Western blot analysis of extracts of various cell lines, using Glycogen synthase 1 (Glycogen synthase 1 (GYS1)) Rabbit mAb (A8912) at 1:1000 dilution.
Secondary antibody: HRP Goat Anti-Rabbit IgG (H+L) (AS014) at 1:10000 dilution.
Lysates/proteins: 25µg per lane.
Blocking buffer: 3% nonfat dry milk in TBST.
Detection: ECL Basic Kit (RM00020).
Exposure time: 30s.