

A8856

Leader in Biomolecular Solutions for Life Science



## SRFBP1 Rabbit pAb

Catalog No.: A8856

### Basic Information

**Observed MW**

48kDa

**Calculated MW**

49kDa

**Category**

Polyclonal Antibody

**Applications**

WB, ELISA

**Cross-Reactivity**

Mouse

### Background

Enables RNA binding activity. Predicted to be involved in maturation of SSU-rRNA. Predicted to be located in perinuclear region of cytoplasm. Predicted to be part of 90S preribosome. Predicted to be active in nucleus.

### Recommended Dilutions

WB 1:500 - 1:2000

### Immunogen Information

**Gene ID**

153443

**Swiss Prot**

Q8NEF9

**Immunogen**

Recombinant fusion protein containing a sequence corresponding to amino acids 1-300 of human SRFBP1 (NP\_689759.2).

**Synonyms**

P49; Rib1; BUD22; STRAP; p49/STRAP; SRFBP1

### Contact



[www.abclonal.com](http://www.abclonal.com)

### Product Information

**Source**

Rabbit

**Isotype**

IgG

**Purification**

Affinity purification

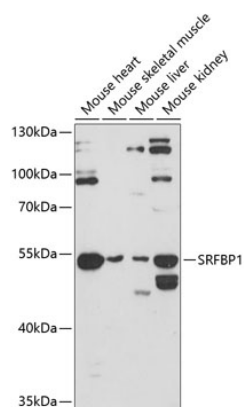
**Storage**

Store at -20°C. Avoid freeze / thaw cycles.

Buffer: PBS with 0.01% thimerosal, 50% glycerol, pH 7.3.

## Validation Data

---



Western blot analysis of various lysates using SRFBP1 Rabbit pAb (A8856) at 1:3000 dilution.  
Secondary antibody: HRP Goat Anti-Rabbit IgG (H+L) (AS014) at 1:10000 dilution.  
Lysates/proteins: 25µg per lane.  
Blocking buffer: 3% nonfat dry milk in TBST.  
Detection: ECL Enhanced Kit (RM00021).  
Exposure time: 90s.