

PMP2 Rabbit pAb

Catalog No.: A8851

Basic Information

Observed MW

15kDa

Calculated MW

15kDa

Category

Primary antibody

Applications

ELISA, WB

Cross-Reactivity

Mouse

Background

The protein encoded by this gene localizes to myelin sheaths of the peripheral nervous system. The encoded protein can bind both the membrane layers of the sheaths and monomeric lipids, and is thought to provide stability to the sheath. A defect in this gene was shown to be a cause of dominant demyelinating CMT neuropathy.

Recommended Dilutions

WB 1:500 - 1:2000

Immunogen Information

Gene ID

5375

Swiss Prot

P02689

Immunogen

Recombinant fusion protein containing a sequence corresponding to amino acids 1-132 of human PMP2 (NP_002668.1).

Synonyms

P2; MP2; CMT1G; FABP8; M-FABP; PMP2

Contact

 | www.abclonal.com

Product Information

Source

Rabbit

Isotype

IgG

Purification

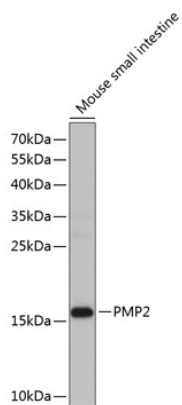
Affinity purification

Storage

Store at -20°C. Avoid freeze / thaw cycles.

Buffer: PBS with 0.02% sodium azide, 50% glycerol, pH7.3.

Validation Data



Western blot analysis of extracts of mouse small intestine, using PMP2 antibody (A8851) at 1:1000 dilution.

Secondary antibody: HRP Goat Anti-Rabbit IgG (H+L) (A5014) at 1:10000 dilution.

Lysates/proteins: 25µg per lane.

Blocking buffer: 3% nonfat dry milk in TBST.

Detection: ECL Basic Kit (RM00020).

Exposure time: 60s.