

VAMP3/Cellubrevin Rabbit mAb

Catalog No.: A8812 **Recombinant**

Basic Information

Observed MW

15kDa

Calculated MW

11kDa

Category

Primary antibody

Applications

ELISA, WB, IF/ICC

Cross-Reactivity

Human, Mouse

CloneNo number

ARC1312

Recommended Dilutions

WB 1:500 - 1:1000

IF/ICC 1:50 - 1:200

Background

Synaptobrevins/VAMPs, syntaxins, and the 25-kD synaptosomal-associated protein are the main components of a protein complex involved in the docking and/or fusion of synaptic vesicles with the presynaptic membrane. This gene is a member of the vesicle-associated membrane protein (VAMP)/synaptobrevin family. Because of its high homology to other known VAMPs, its broad tissue distribution, and its subcellular localization, the protein encoded by this gene was shown to be the human equivalent of the rodent cellubrevin. In platelets the protein resides on a compartment that is not mobilized to the plasma membrane on calcium or thrombin stimulation.

Immunogen Information

Gene ID

9341

Swiss Prot

Q15836

Immunogen

Recombinant fusion protein containing a sequence corresponding to amino acids 1-100 of human VAMP3/Cellubrevin (Q15836).

Synonyms

CEB; VAMP3/Cellubrevin

Contact

 | www.abclonal.com

Product Information

Source

Rabbit

Isotype

IgG

Purification

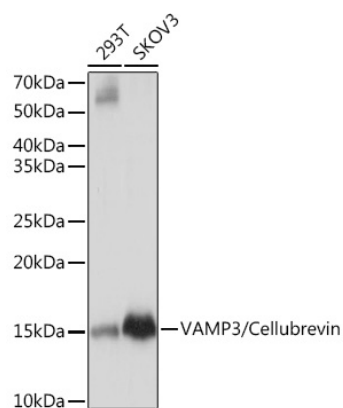
Affinity purification

Storage

Store at -20°C. Avoid freeze / thaw cycles.

Buffer: PBS with 0.02% sodium azide, 0.05% BSA, 50% glycerol, pH7.3.

Validation Data



Western blot analysis of various lysates using VAMP3/VAMP3/Cellubrevin Rabbit mAb (A8812) at 1:1000 dilution.

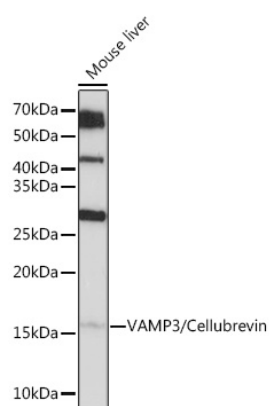
Secondary antibody: HRP Goat Anti-Rabbit IgG (H+L) (A5014) at 1:10000 dilution.

Lysates/proteins: 25µg per lane.

Blocking buffer: 3% nonfat dry milk in TBST.

Detection: ECL Basic Kit (RM00020).

Exposure time: 1s.



Western blot analysis of lysates from Mouse liver, using VAMP3/VAMP3/Cellubrevin Rabbit mAb (A8812) at 1:1000 dilution.

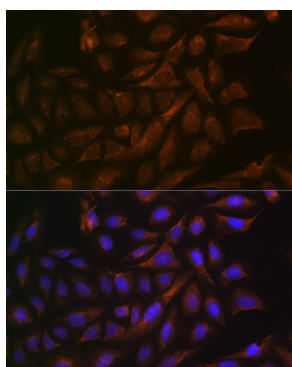
Secondary antibody: HRP Goat Anti-Rabbit IgG (H+L) (A5014) at 1:10000 dilution.

Lysates/proteins: 25µg per lane.

Blocking buffer: 3% nonfat dry milk in TBST.

Detection: ECL Basic Kit (RM00020).

Exposure time: 60s.



Immunofluorescence analysis of U-2 OS cells using VAMP3/VAMP3/Cellubrevin Rabbit mAb (A8812) at dilution of 1:100 (40x lens). Secondary antibody: Cy3 Goat Anti-Rabbit IgG (H+L) (A5007) at 1:500 dilution. Blue: DAPI for nuclear staining.