

A8684

Leader in Biomolecular Solutions for Life Science



## GIMAP5 Rabbit pAb

Catalog No.: A8684

### Basic Information

#### Observed MW

34kDa

#### Calculated MW

35kDa

#### Category

Polyclonal Antibody

#### Applications

WB, ELISA

#### Cross-Reactivity

Human, Mouse, Rat

### Background

This gene encodes a protein belonging to the GTP-binding superfamily and to the immun-associated nucleotide (IAN) subfamily of nucleotide-binding proteins. In humans, the IAN subfamily genes are located in a cluster at 7q36.1. This gene encodes an antiapoptotic protein that functions in T-cell survival. Polymorphisms in this gene are associated with systemic lupus erythematosus. Read-through transcription exists between this gene and the neighboring upstream GIMAP1 (GTPase, IMAP family member 1) gene.

### Recommended Dilutions

WB 1:500 - 1:2000

### Immunogen Information

#### Gene ID

55340

#### Swiss Prot

Q96F15

#### Immunogen

Recombinant fusion protein containing a sequence corresponding to amino acids 190-270 of human GIMAP5 (NP\_060854.2).

#### Synonyms

IAN4; IAN5; IROD; IAN-5; IMAP3; NCPH2; HIMAP3; IAN4L1; GIMAP5

### Contact



[www.abclonal.com](http://www.abclonal.com)

### Product Information

#### Source

Rabbit

#### Isotype

IgG

#### Purification

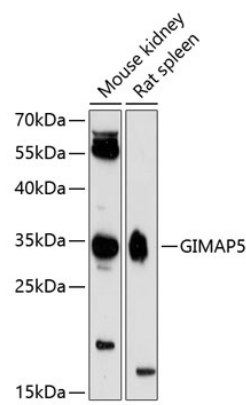
Affinity purification

#### Storage

Store at -20°C. Avoid freeze / thaw cycles.

Buffer: PBS with 0.01% thimerosal, 50% glycerol, pH7.3.

Validation Data



Western blot analysis of various lysates using GIMAP5 Rabbit pAb (A8684) at 1:3000 dilution.  
Secondary antibody: HRP Goat Anti-Rabbit IgG (H+L) (A5014) at 1:10000 dilution.  
Lysates/proteins: 25µg per lane.  
Blocking buffer: 3% nonfat dry milk in TBST.  
Detection: ECL Enhanced Kit (RM00021).  
Exposure time: 90s.