

A8617

Leader in Biomolecular Solutions for Life Science



## KIFC3 Rabbit pAb

Catalog No.: A8617

### Basic Information

#### Observed MW

120kDa

#### Calculated MW

93kDa

#### Category

Polyclonal Antibody

#### Applications

WB, ELISA

#### Cross-Reactivity

Human, Rat

### Background

This gene encodes a member of the kinesin-14 family of microtubule motors. Members of this family play a role in the formation, maintenance and remodeling of the bipolar mitotic spindle. The protein encoded by this gene has cytoplasmic functions in the interphase cells. It may also be involved in the final stages of cytokinesis. Alternative splicing results in multiple transcript variants encoding different isoforms.

### Recommended Dilutions

WB 1:200 - 1:2000

### Immunogen Information

#### Gene ID

3801

#### Swiss Prot

Q9BVG8

#### Immunogen

Recombinant fusion protein containing a sequence corresponding to amino acids 140-390 of human KIFC3 (NP\_005541.3).

#### Synonyms

KIFC3

### Contact



[www.abclonal.com](http://www.abclonal.com)

### Product Information

#### Source

Rabbit

#### Isotype

IgG

#### Purification

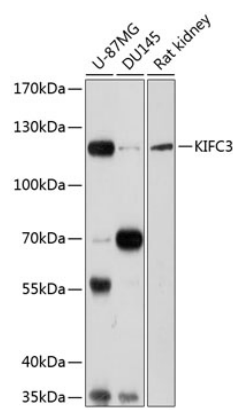
Affinity purification

#### Storage

Store at -20°C. Avoid freeze / thaw cycles.

Buffer: PBS with 0.02% sodium azide, 50% glycerol, pH 7.3.

# Validation Data



Western blot analysis of extracts of various cell lines, using KIFC3 antibody (A8617) at 1:1000 dilution.  
Secondary antibody: HRP Goat Anti-Rabbit IgG (H+L) (AS014) at 1:10000 dilution.  
Lysates/proteins: 25µg per lane.  
Blocking buffer: 3% nonfat dry milk in TBST.  
Detection: ECL Basic Kit (RM00020).  
Exposure time: 30s.