

CHCHD3 Rabbit pAb

Catalog No.: A8584 **1 Publications**

Basic Information

Observed MW

30kDa

Calculated MW

26kDa

Category

Primary antibody

Applications

ELISA, WB, IF/ICC, IP

Cross-Reactivity

Human, Mouse, Rat

Background

The protein encoded by this gene is an inner mitochondrial membrane scaffold protein. Absence of the encoded protein affects the structural integrity of mitochondrial cristae and leads to reductions in ATP production, cell growth, and oxygen consumption. This protein is part of the mitochondrial contact site and cristae organizing system (MICOS). Several transcript variants encoding different isoforms have been found for this gene.

Recommended Dilutions

WB 1:500 - 1:2000

IF/ICC 1:50 - 1:200

IP 0.5µg-4µg antibody for
400µg-600µg extracts of
whole cells

Immunogen Information

Gene ID

54927

Swiss Prot

Q9NX63

Immunogen

Recombinant fusion protein containing a sequence corresponding to amino acids 1-227 of human CHCHD3 (NP_060282.1).

Synonyms

Mic19; MINOS3; MICOS19; PPP1R22; CHCHD3

Contact

 | www.abclonal.com

Product Information

Source

Rabbit

Isotype

IgG

Purification

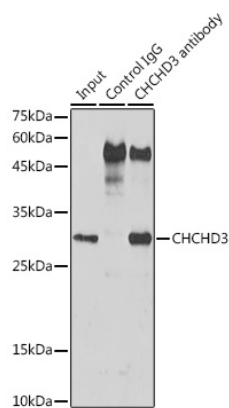
Affinity purification

Storage

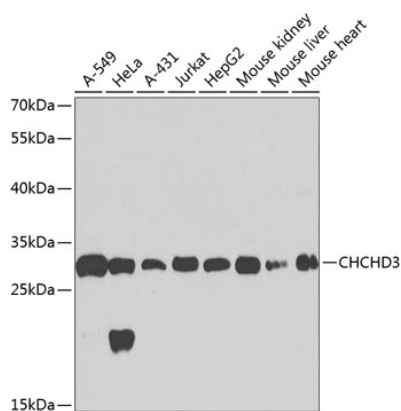
Store at -20°C. Avoid freeze / thaw cycles.

Buffer: PBS with 0.02% sodium azide, 50% glycerol, pH7.3.

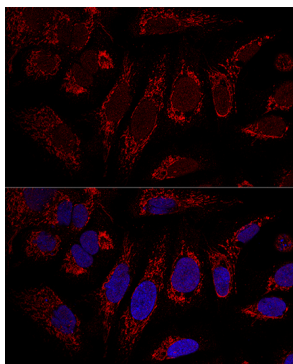
Validation Data



Immunoprecipitation analysis of 600 µg extracts of Mouse liver cells using 3 µg CHCHD3 antibody (A8584). Western blot was performed from the immunoprecipitate using CHCHD3 antibody (A8584) at a dilution of 1:1000.



Western blot analysis of various lysates using CHCHD3 Rabbit pAb (A8584) at 1:1000 dilution. Secondary antibody: HRP Goat Anti-Rabbit IgG (H+L) (A5014) at 1:10000 dilution. Lysates/proteins: 25µg per lane. Blocking buffer: 3% nonfat dry milk in TBST. Detection: ECL Basic Kit (RM00020). Exposure time: 40s.



Confocal immunofluorescence analysis of U2OS cells using CHCHD3 Rabbit pAb (A8584) at dilution of 1:100. Blue: DAPI for nuclear staining.