

A8542

Leader in Biomolecular Solutions for Life Science



DLG1 Rabbit pAb

Catalog No.: A8542

4 Publications

Basic Information

Observed MW

114kDa

Calculated MW

100kDa

Category

Mouse Monoclonal Antibody

Applications

WB,IF/ICC,ELISA

Cross-Reactivity

Human,Mouse,Rat

Background

This gene encodes a multi-domain scaffolding protein that is required for normal development. This protein may have a role in septate junction formation, signal transduction, cell proliferation, synaptogenesis and lymphocyte activation. A multitude of transcript variants deriving from alternative splicing and the use of multiple alternate promoter have been observed, including some splice variants that may be specific to brain and other tissues. An upstream uORF may regulate translation at some splice variants of this gene.

Recommended Dilutions

WB	1:500 - 1:2000
IF/ICC	1:50 - 1:200

Immunogen Information

Gene ID

1739

Swiss Prot

Q12959

Immunogen

Recombinant fusion protein containing a sequence corresponding to amino acids 1-190 of human DLG1 (NP_004078.2).

Synonyms

hdlg; DLGH1; SAP97; SAP-97; DLG1

Contact



www.abclonal.com

Product Information

Source

Rabbit

Isotype

IgG

Purification

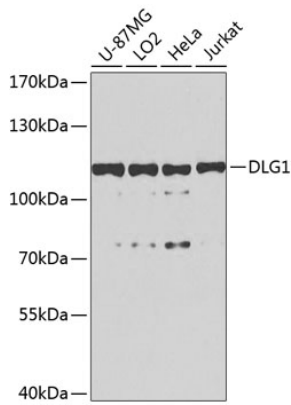
Affinity purification

Storage

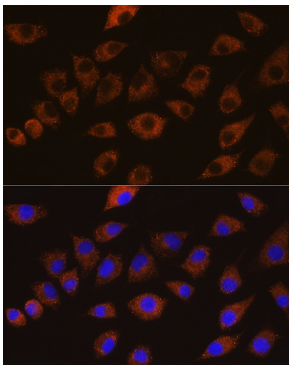
Store at -20°C. Avoid freeze / thaw cycles.

Buffer: PBS with 0.02% sodium azide,50% glycerol,pH7.3.

Validation Data



Western blot analysis of extracts of various cell lines, using DLG1 antibody (A8542) at 1:1000 dilution.
Secondary antibody: HRP Goat Anti-Rabbit IgG (H+L) (A5014) at 1:10000 dilution.
Lysates/proteins: 25µg per lane.
Blocking buffer: 3% nonfat dry milk in TBST.
Detection: ECL Basic Kit (RM00020).
Exposure time: 90s.



Immunofluorescence analysis of L929 cells using DLG1 Rabbit pAb (A8542) at dilution of 1:100 (40x lens). Blue: DAPI for nuclear staining.