

A8451

Leader in Biomolecular Solutions for Life Science



# DNA Polymerase gamma Rabbit pAb

Catalog No.: A8451

## Basic Information

### Observed MW

140kDa

### Calculated MW

140kDa

### Category

Polyclonal Antibody

### Applications

WB, ELISA

### Cross-Reactivity

Human, Mouse, Rat

## Background

Mitochondrial DNA polymerase is heterotrimeric, consisting of a homodimer of accessory subunits plus a catalytic subunit. The protein encoded by this gene is the catalytic subunit of mitochondrial DNA polymerase. The encoded protein contains a polyglutamine tract near its N-terminus that may be polymorphic. Defects in this gene are a cause of progressive external ophthalmoplegia with mitochondrial DNA deletions 1 (PEOA1), sensory ataxic neuropathy dysarthria and ophthalmoparesis (SANDO), Alpers-Huttenlocher syndrome (AHS), and mitochondrial neurogastrointestinal encephalopathy syndrome (MNGIE). Two transcript variants encoding the same protein have been found for this gene.

## Recommended Dilutions

WB 1:100 - 1:500

## Immunogen Information

### Gene ID

5428

### Swiss Prot

P54098

### Immunogen

Recombinant fusion protein containing a sequence corresponding to amino acids 540-720 of human DNA Polymerase gamma (NP\_002684.1).

### Synonyms

PEO; MDP1; SCAE; MIRAS; POLG1; POLGA; SANDO; MTDP54A; MTDP54B; DNA Polymerase gamma

## Contact



[www.abclonal.com](http://www.abclonal.com)

## Product Information

### Source

Rabbit

### Isotype

IgG

### Purification

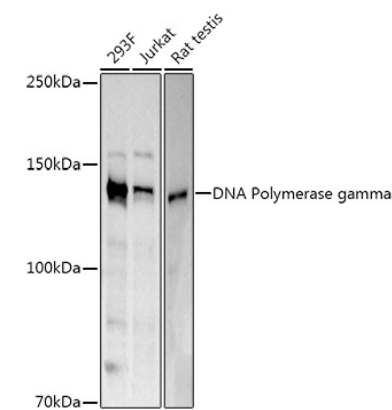
Affinity purification

### Storage

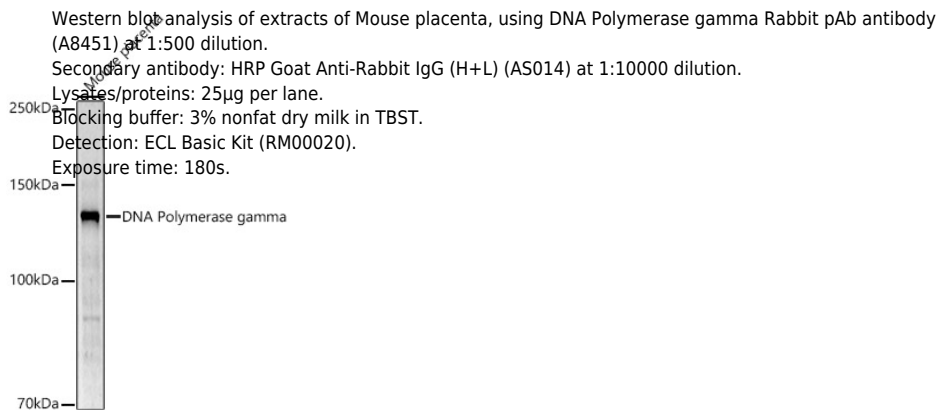
Store at -20°C. Avoid freeze / thaw cycles.

Buffer: PBS with 0.05% proclin300, 50% glycerol, pH7.3.

Validation Data



Western blot analysis of extracts of various cell lines, using DNA Polymerase gamma Rabbit pAb antibody (A8451) at 1:500 dilution.  
Secondary antibody: HRP Goat Anti-Rabbit IgG (H+L) (AS014) at 1:10000 dilution.  
Lysates/proteins: 25µg per lane.  
Blocking buffer: 3% nonfat dry milk in TBST.  
Detection: ECL Basic Kit (RM00020).  
Exposure time: 60s.



Western blot analysis of extracts of Mouse placenta, using DNA Polymerase gamma Rabbit pAb antibody (A8451) at 1:500 dilution.  
Secondary antibody: HRP Goat Anti-Rabbit IgG (H+L) (AS014) at 1:10000 dilution.  
Lysates/proteins: 25µg per lane.  
Blocking buffer: 3% nonfat dry milk in TBST.  
Detection: ECL Basic Kit (RM00020).  
Exposure time: 180s.