

A8443

Leader in Biomolecular Solutions for Life Science



NFKBIE Rabbit pAb

Catalog No.: A8443

Basic Information

Observed MW

60kDa

Calculated MW

53kDa

Category

Polyclonal Antibody

Applications

WB, ELISA

Cross-Reactivity

Mouse

Background

The protein encoded by this gene binds to components of NF-kappa-B, trapping the complex in the cytoplasm and preventing it from activating genes in the nucleus. Phosphorylation of the encoded protein targets it for destruction by the ubiquitin pathway, which activates NF-kappa-B by making it available to translocate to the nucleus.

Recommended Dilutions

WB 1:500 - 1:2000

Immunogen Information

Gene ID

4794

Swiss Prot

O00221

Immunogen

Recombinant fusion protein containing a sequence corresponding to amino acids 140-280 of human NFKBIE (NP_004547.2).

Synonyms

IKBE; NFKBIE

Contact



www.abclonal.com

Product Information

Source

Rabbit

Isotype

IgG

Purification

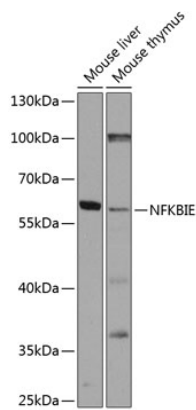
Affinity purification

Storage

Store at -20°C. Avoid freeze / thaw cycles.

Buffer: PBS with 0.02% sodium azide, 50% glycerol, pH 7.3.

Validation Data



Western blot analysis of various lysates using NFKBIE Rabbit pAb (A8443) at 1:1000 dilution.
Secondary antibody: HRP Goat Anti-Rabbit IgG (H+L) (A5014) at 1:10000 dilution.
Lysates/proteins: 25µg per lane.
Blocking buffer: 3% nonfat dry milk in TBST.
Detection: ECL Basic Kit (RM00020).
Exposure time: 90s.