

A8396

Leader in Biomolecular Solutions for Life Science



TUBB8 Rabbit pAb

Catalog No.: A8396

Basic Information

Observed MW

55kDa

Calculated MW

50kDa

Category

Polyclonal Antibody

Applications

WB,IF/ICC,ELISA

Cross-Reactivity

Human

Background

The protein encoded by this gene represents the primary beta-tubulin subunit of oocytes and the early embryo. Defects in this gene, which is primate-specific, are a cause of oocyte maturation defect 2 and infertility.

Recommended Dilutions

WB	1:500 - 1:1000
IF/ICC	1:50 - 1:200

Immunogen Information

Gene ID

347688

Swiss Prot

Q3ZCM7

Immunogen

Recombinant fusion protein containing a sequence corresponding to amino acids 350-444 of human TUBB8 (NP_817124.1).

Synonyms

OOMD; OOMD2; OZEMA2; bA631M21.2; TUBB8

Contact



www.abclonal.com

Product Information

Source

Rabbit

Isotype

IgG

Purification

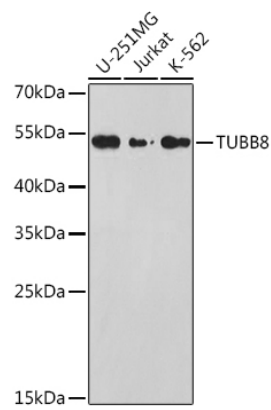
Affinity purification

Storage

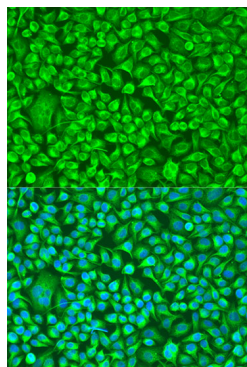
Store at -20°C. Avoid freeze / thaw cycles.

Buffer: PBS with 0.02% sodium azide,50% glycerol,pH7.3.

Validation Data



Western blot analysis of extracts of various cell lines, using TUBB8 antibody (A8396) at 1:1000 dilution.
Secondary antibody: HRP Goat Anti-Rabbit IgG (H+L) (A5014) at 1:10000 dilution.
Lysates/proteins: 25µg per lane.
Blocking buffer: 3% nonfat dry milk in TBST.
Detection: ECL Basic Kit (RM00020).
Exposure time: 90s.



Immunofluorescence analysis of U2OS cells using TUBB8 antibody (A8396) at dilution of 1:100. Blue: DAPI for nuclear staining.