

A8355

Leader in Biomolecular Solutions for Life Science



## ZP3 Rabbit pAb

Catalog No.: A8355

### Basic Information

#### Observed MW

47kDa

#### Calculated MW

47kDa

#### Category

Polyclonal Antibody

#### Applications

WB,IF/ICC,ELISA

#### Cross-Reactivity

Human,Rat

### Background

The zona pellucida is an extracellular matrix that surrounds the oocyte and early embryo. It is composed primarily of three or four glycoproteins with various functions during fertilization and preimplantation development. The protein encoded by this gene is a structural component of the zona pellucida and functions in primary binding and induction of the sperm acrosome reaction. The nascent protein contains a N-terminal signal peptide sequence, a conserved ZP domain, a C-terminal consensus furin cleavage site, and a transmembrane domain. It is hypothesized that furin cleavage results in release of the mature protein from the plasma membrane for subsequent incorporation into the zona pellucida matrix. However, the requirement for furin cleavage in this process remains controversial based on mouse studies. A variation in the last exon of this gene has previously served as the basis for an additional ZP3 locus; however, sequence and literature review reveals that there is only one full-length ZP3 locus in the human genome. Another locus encoding a bipartite transcript designated POMZP3 contains a duplication of the last four exons of ZP3, including the above described variation, and maps closely to this gene.

### Recommended Dilutions

WB	1:500 - 1:2000
IF/ICC	1:50 - 1:200

### Immunogen Information

#### Gene ID

7784

#### Swiss Prot

P21754

#### Immunogen

Recombinant fusion protein containing a sequence corresponding to amino acids 170-390 of human ZP3 (NP\_001103824.1).

#### Synonyms

ZPC; ZP3A; ZP3B; Zp-3; OOMD3; OZEMA3; ZP3

### Contact



[www.abclonal.com](http://www.abclonal.com)

### Product Information

#### Source

Rabbit

#### Isotype

IgG

#### Purification

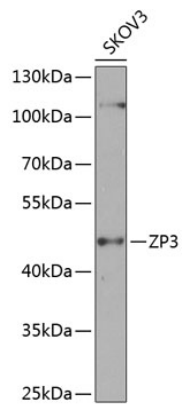
Affinity purification

#### Storage

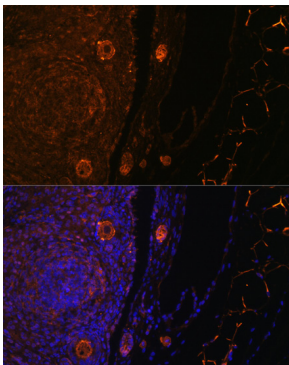
Store at -20°C. Avoid freeze / thaw cycles.

Buffer: PBS with 0.02% sodium azide,50% glycerol,pH7.3.

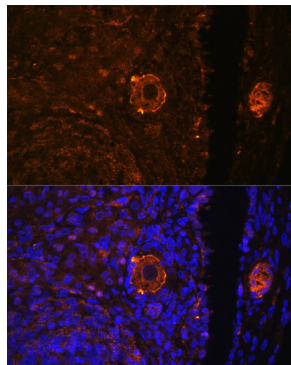
## Validation Data



Western blot analysis of extracts of SKOV3 cells, using ZP3 antibody (A8355) at 1:1000 dilution.  
Secondary antibody: HRP Goat Anti-Rabbit IgG (H+L) (A5014) at 1:10000 dilution.  
Lysates/proteins: 25µg per lane.  
Blocking buffer: 3% nonfat dry milk in TBST.  
Detection: ECL Basic Kit (RM00020).  
Exposure time: 90s.



Immunofluorescence analysis of rat oophoroma cells using ZP3 antibody (A8355) at dilution of 1:100. Blue: DAPI for nuclear staining.



Immunofluorescence analysis of rat oophoroma cells using ZP3 antibody (A8355) at dilution of 1:100. Blue: DAPI for nuclear staining.