

# EPHA4 Rabbit pAb

Catalog No.: A8346 **2 Publications**

## Basic Information

**Observed MW**

110kDa

**Calculated MW**

110kDa

**Category**

Primary antibody

**Applications**

ELISA, WB, IF/ICC

**Cross-Reactivity**

Human, Mouse, Rat

## Background

This gene belongs to the ephrin receptor subfamily of the protein-tyrosine kinase family. EPH and EPH-related receptors have been implicated in mediating developmental events, particularly in the nervous system. Receptors in the EPH subfamily typically have a single kinase domain and an extracellular region containing a Cys-rich domain and 2 fibronectin type III repeats. The ephrin receptors are divided into 2 groups based on the similarity of their extracellular domain sequences and their affinities for binding ephrin-A and ephrin-B ligands. Multiple transcript variants encoding different isoforms have been found for this gene.

## Recommended Dilutions

**WB** 1:500 - 1:2000**IF/ICC** 1:50 - 1:200

## Immunogen Information

**Gene ID**

2043

**Swiss Prot**

P54764

**Immunogen**

Recombinant fusion protein containing a sequence corresponding to amino acids 20-100 of human EPHA4 (NP\_004429.1).

**Synonyms**

EK8; SEK; HEK8; TYRO1; EPHA4

## Contact

 | [www.abclonal.com](http://www.abclonal.com)

## Product Information

**Source**

Rabbit

**Isotype**

IgG

**Purification**

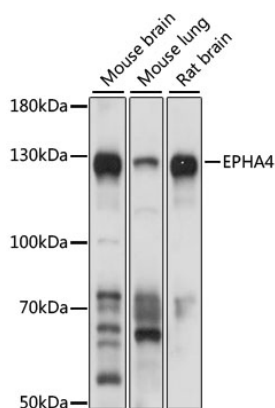
Affinity purification

**Storage**

Store at -20°C. Avoid freeze / thaw cycles.

Buffer: PBS with 0.01% thimerosal, 50% glycerol, pH7.3.

## Validation Data



Western blot analysis of extracts of various cell lines, using EPHA4 antibody (A8346) at 1:1000 dilution.

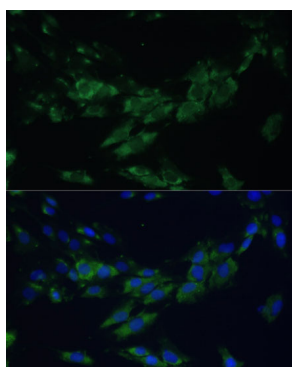
Secondary antibody: HRP Goat Anti-Rabbit IgG (H+L) (A5014) at 1:10000 dilution.

Lysates/proteins: 25µg per lane.

Blocking buffer: 3% nonfat dry milk in TBST.

Detection: ECL Basic Kit (RM00020).

Exposure time: 3s.



Immunofluorescence analysis of C6 cells using EPHA4 antibody (A8346) at dilution of 1:100. Blue: DAPI for nuclear staining.