

A8339

Leader in Biomolecular Solutions for Life Science



## GRPEL2 Rabbit pAb

Catalog No.: A8339

2 Publications

### Basic Information

#### Observed MW

20kDa

#### Calculated MW

25kDa

#### Category

Mouse Monoclonal Antibody

#### Applications

WB, IHC-P, ELISA

#### Cross-Reactivity

Human, Mouse, Rat

### Background

Predicted to enable adenylyl-nucleotide exchange factor activity and unfolded protein binding activity. Predicted to be involved in protein import into mitochondrial matrix. Located in mitochondrion.

### Recommended Dilutions

WB	1:500 - 1:2000
IHC-P	1:50 - 1:200

### Immunogen Information

#### Gene ID

134266

#### Swiss Prot

Q8TAA5

#### Immunogen

Recombinant fusion protein containing a sequence corresponding to amino acids 33-225 of human GRPEL2 (NP\_689620.2).

#### Synonyms

Mt-GrpE#2; GRPEL2

### Contact



[www.abclonal.com](http://www.abclonal.com)

### Product Information

#### Source

Rabbit

#### Isotype

IgG

#### Purification

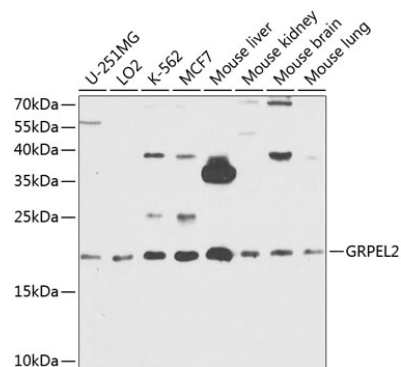
Affinity purification

#### Storage

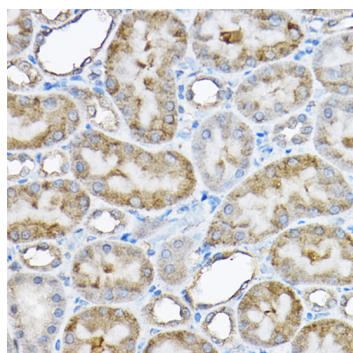
Store at -20°C. Avoid freeze / thaw cycles.

Buffer: PBS with 0.02% sodium azide, 50% glycerol, pH 7.3.

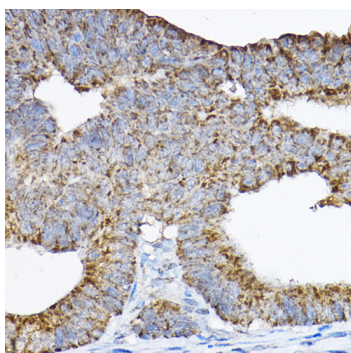
## Validation Data



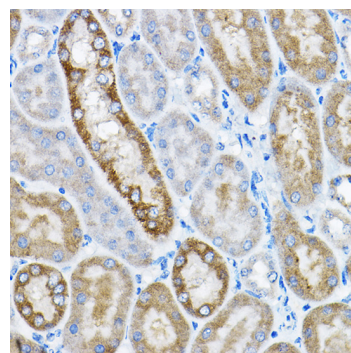
Western blot analysis of extracts of various cell lines, using GRPEL2 antibody (A8339) at 1:1000 dilution. Secondary antibody: HRP Goat Anti-Rabbit IgG (H+L) (A5014) at 1:10000 dilution. Lysates/proteins: 25µg per lane. Blocking buffer: 3% nonfat dry milk in TBST. Detection: ECL Basic Kit (RM00020). Exposure time: 90s.



Immunohistochemistry analysis of paraffin-embedded rat kidney using GRPEL2 Rabbit pAb (A8339) at dilution of 1:200 (40x lens). Perform high pressure antigen retrieval with 10 mM citrate buffer pH 6.0 before commencing with IHC staining protocol.



Immunohistochemistry analysis of paraffin-embedded human colon carcinoma using GRPEL2 Rabbit pAb (A8339) at dilution of 1:200 (40x lens). Perform high pressure antigen retrieval with 10 mM citrate buffer pH 6.0 before commencing with IHC staining protocol.



Immunohistochemistry analysis of paraffin-embedded mouse kidney using GRPEL2 Rabbit pAb (A8339) at dilution of 1:200 (40x lens). Perform high pressure antigen retrieval with 10 mM citrate buffer pH 6.0 before commencing with IHC staining protocol.