

Mannose Receptor/CD206 Rabbit pAb

Catalog No.: A8301 **19 Publications**

Basic Information

Observed MW

190-250kDa

Calculated MW

166kDa

Category

Primary antibody

Applications

ELISA, WB

Cross-Reactivity

Mouse, Rat

Background

The recognition of complex carbohydrate structures on glycoproteins is an important part of several biological processes, including cell-cell recognition, serum glycoprotein turnover, and neutralization of pathogens. The protein encoded by this gene is a type I membrane receptor that mediates the endocytosis of glycoproteins by macrophages. The protein has been shown to bind high-mannose structures on the surface of potentially pathogenic viruses, bacteria, and fungi so that they can be neutralized by phagocytic engulfment.

Recommended Dilutions

WB 1:1000 - 1:5000

Immunogen Information

Gene ID

4360

Swiss Prot

P22897

Immunogen

Recombinant fusion protein containing a sequence corresponding to amino acids 610-860 of human Mannose Receptor/CD206 (NP_002429.1).

Synonyms

MMR; hMR; CD206; MRC1L1; CLEC13D; CLEC13DL; bA541119.1; Mannose Receptor/CD206

Contact

 | www.abclonal.com

Product Information

Source

Rabbit

Isotype

IgG

Purification

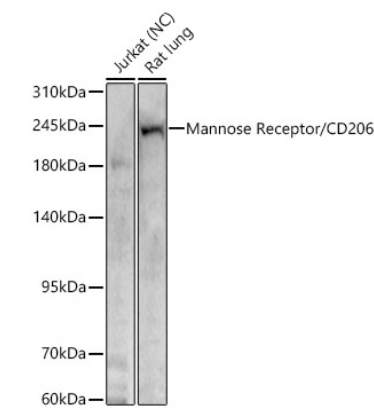
Affinity purification

Storage

Store at -20°C. Avoid freeze / thaw cycles.

Buffer: PBS with 0.05% proclin300, 50% glycerol, pH7.3.

Validation Data



Western blot analysis of various lysates using Mannose Receptor/CD206 Rabbit pAb (A8301) at 1:2000 dilution.
Secondary antibody:HRP Goat Anti-Rabbit IgG (H+L)(A5014) at 1:10000 dilution.
Lysates/proteins: 25 µg per lane.
Blocking buffer: 3% nonfat dry milk in TBST.
Detection:ECL Basic Kit (RM00020).
Negative control (NC): Jurkat.
Exposure time: 30s.