

A8285

Leader in Biomolecular Solutions for Life Science



## HYLS1 Rabbit pAb

Catalog No.: A8285

### Basic Information

#### Observed MW

37kDa

#### Calculated MW

34kDa

#### Category

Polyclonal Antibody

#### Applications

WB, ELISA

#### Cross-Reactivity

Human

### Background

This gene encodes a protein localized to the cytoplasm. Mutations in this gene are associated with hydroletharus syndrome. Multiple alternatively spliced variants, encoding the same protein, have been identified.

### Recommended Dilutions

WB 1:500 - 1:2000

### Immunogen Information

#### Gene ID

219844

#### Swiss Prot

Q96M11

#### Immunogen

Recombinant fusion protein containing a sequence corresponding to amino acids 70-299 of human HYLS1 (NP\_659451.1).

#### Synonyms

HLS; HYLS1

### Contact



[www.abclonal.com](http://www.abclonal.com)

### Product Information

#### Source

Rabbit

#### Isotype

IgG

#### Purification

Affinity purification

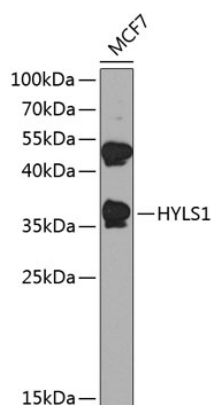
#### Storage

Store at -20°C. Avoid freeze / thaw cycles.

Buffer: PBS with 0.02% sodium azide, 50% glycerol, pH 7.3.

## Validation Data

---



Western blot analysis of lysates from MCF-7 cells, using HYLS1 Rabbit pAb (A8285) at 1:1000 dilution.  
Secondary antibody: HRP Goat Anti-Rabbit IgG (H+L) (A5014) at 1:10000 dilution.  
Lysates/proteins: 25µg per lane.  
Blocking buffer: 3% nonfat dry milk in TBST.  
Detection: ECL Basic Kit (RM00020).  
Exposure time: 90s.