

A8284

Leader in Biomolecular Solutions for Life Science



## LLGL2 Rabbit pAb

Catalog No.: A8284

### Basic Information

#### Observed MW

113kDa

#### Calculated MW

114kDa

#### Category

Mouse Monoclonal Antibody

#### Applications

WB,IF/ICC,ELISA

#### Cross-Reactivity

Human,Mouse,Rat

### Background

Predicted to enable GTPase activator activity; PDZ domain binding activity; and myosin II binding activity. Acts upstream of or within establishment or maintenance of polarity of embryonic epithelium; labyrinthine layer development; and post-embryonic development. Predicted to be located in cytosol and intracellular membrane-bounded organelle. Predicted to be active in cortical actin cytoskeleton and plasma membrane. Is expressed in several structures, including cardiovascular system; endocrine gland; genitourinary system; gut; and nasal cavity epithelium. Orthologous to human LLGL2 (LLGL scribble cell polarity complex component 2).

### Recommended Dilutions

WB 1:500 - 1:2000

IF/ICC 1:50 - 1:200

### Immunogen Information

#### Gene ID

217325

#### Swiss Prot

#### Immunogen

Recombinant fusion protein containing a sequence corresponding to amino acids 620-819 of mouse LLGL2 (NP\_663413.2).

#### Synonyms

LgIh2; 9130006H11Rik; LLGL2

### Contact



[www.abclonal.com](http://www.abclonal.com)

### Product Information

#### Source

Rabbit

#### Isotype

IgG

#### Purification

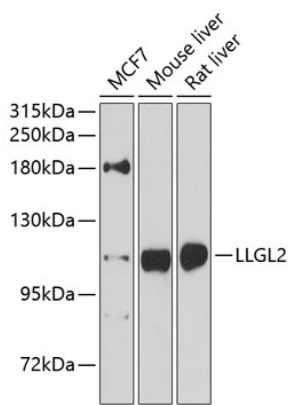
Affinity purification

#### Storage

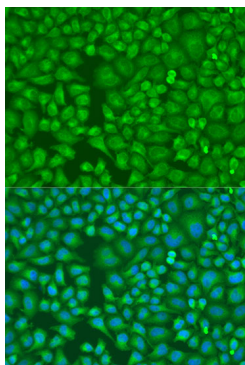
Store at -20°C. Avoid freeze / thaw cycles.

Buffer: PBS with 0.02% sodium azide,50% glycerol,pH7.3.

Validation Data



Western blot analysis of extracts of various cell lines, using LLGL2 antibody (A8284) at 1:1000 dilution.  
Secondary antibody: HRP Goat Anti-Rabbit IgG (H+L) (A5014) at 1:10000 dilution.  
Lysates/proteins: 25µg per lane.  
Blocking buffer: 3% nonfat dry milk in TBST.  
Detection: ECL Enhanced Kit (RM00021).  
Exposure time: 5s.



Immunofluorescence analysis of U2OS cells using LLGL2 antibody (A8284) at dilution of 1:100. Blue: DAPI for nuclear staining.