

# KCTD15 Rabbit pAb

Catalog No.: A8256

## Basic Information

### Observed MW

32kDa

### Calculated MW

32kDa

### Category

Primary antibody

### Applications

ELISA, WB

### Cross-Reactivity

Human, Mouse, Rat

## Background

Enables identical protein binding activity. Predicted to be involved in protein homooligomerization.

## Recommended Dilutions

WB 1:500 - 1:2000

## Immunogen Information

### Gene ID

79047

### Swiss Prot

Q96S11

### Immunogen

Recombinant fusion protein containing a sequence corresponding to amino acids 1-234 of human KCTD15 (NP\_076981.2).

### Synonyms

KCTD15

## Contact

 | [www.abclonal.com](http://www.abclonal.com)

## Product Information

### Source

Rabbit

### Isotype

IgG

### Purification

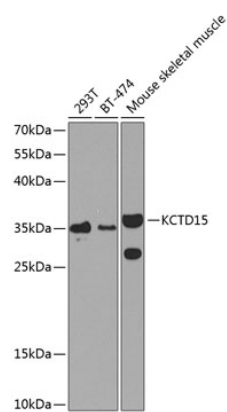
Affinity purification

### Storage

Store at -20°C. Avoid freeze / thaw cycles.

Buffer: PBS with 0.02% sodium azide, 50% glycerol, pH 7.3.

# Validation Data



Western blot analysis of extracts of various cell lines, using KCTD15 antibody (A8256) at 1:1000 dilution.  
Secondary antibody: HRP Goat Anti-Rabbit IgG (H+L) (A5014) at 1:10000 dilution.  
Lysates/proteins: 25µg per lane.  
Blocking buffer: 3% nonfat dry milk in TBST.  
Detection: ECL Basic Kit (RM00020).  
Exposure time: 90s.